

# RPL13 Rabbit Polyclonal Antibody



CAB4083

## Product Information

### Size:

20uL, 50uL, 100uL, 200uL

### Observed MW:

28kDa

### Calculated MW:

18kDa/24kDa

### Applications:

WB IHC IF

### Reactivity:

Human, Mouse, Rat

## Antibody Information

### Recommended dilutions:

WB 1:200 - 1:2000 IHC 1:50  
- 1:200 IF 1:50 - 1:200

### Source:

Rabbit

### Isotype:

IgG

### Purification:

Affinity purification

## Protein Background

Ribosomes, the organelles that catalyze protein synthesis, consist of a small 40S subunit and a large 60S subunit. Together these subunits are composed of 4 RNA species and approximately 80 structurally distinct proteins. This gene encodes a ribosomal protein that is a component of the 60S subunit. The protein belongs to the L13E family of ribosomal proteins. It is located in the cytoplasm. This gene is expressed at significantly higher levels in benign breast lesions than in breast carcinomas. Alternatively spliced transcript variants encoding distinct isoforms have been found for this gene. As is typical for genes encoding ribosomal proteins, there are multiple processed pseudogenes of this gene dispersed through the genome.

## Immunogen information

### Gene ID:

6137

### Uniprot

P26373

### Synonyms:

RPL13; BBC1; D16S444E; D16S44E; L13

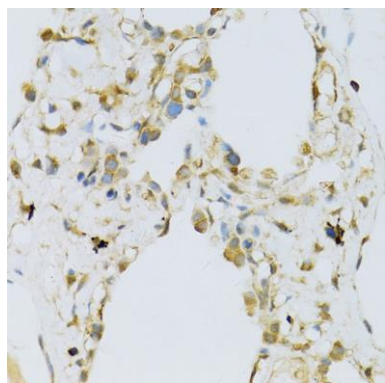
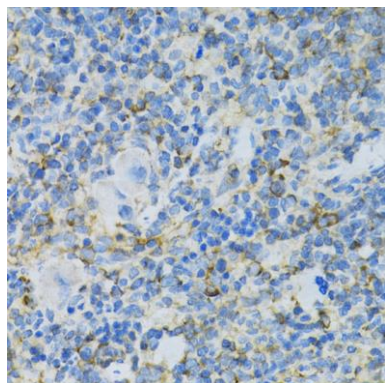
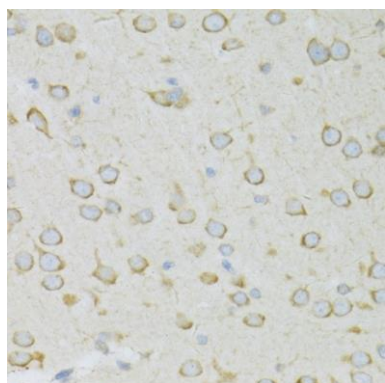
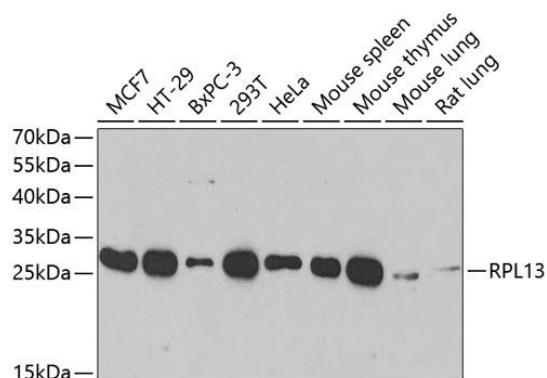
### Immunogen:

Recombinant fusion protein containing a sequence corresponding to amino acids 1-211 of human RPL13 (NP\_150254.1).

### Storage:

Store at -20°C. Avoid freeze / thaw cycles. Buffer: PBS with 0.02% sodium azide, 50% glycerol, pH7.3.

## Product Images



Western blot analysis of extracts of various cell lines, using RPL13 antibody (CAB4083) at 1:1000 dilution. Secondary antibody: HRP Goat Anti-Rabbit IgG (H+L) (CABS014) at 1:10000 dilution. Lysates/proteins: 25ug per lane. Blocking buffer: 3% nonfat dry milk in TBST. Detection: ECL Basic Kit (CABM00020). Exposure time: 15s.

Immunohistochemistry of paraffin-embedded rat brain using RPL13 antibody (CAB4083) at dilution of 1:100 (40x lens).

Immunohistochemistry of paraffin-embedded rat spleen using RPL13 antibody (CAB4083) at dilution of 1:100 (40x lens).

Immunohistochemistry of paraffin-embedded human lung using RPL13 antibody (CAB4083) at dilution of 1:100 (40x lens).