

RPL23A Rabbit Polyclonal Antibody



CAB4086

Product Information

Size:

20uL, 50uL, 100uL, 200uL

Observed MW:

20kDa

Calculated MW:

17kDa

Applications:

WB IHC IF

Reactivity:

Human, Mouse, Rat

Antibody Information

Recommended dilutions:

WB 1:500 - 1:2000 IHC 1:50
- 1:200 IF 1:50 - 1:100

Source:

Rabbit

Isotype:

IgG

Purification:

Affinity purification

Protein Background

Ribosomes, the organelles that catalyze protein synthesis, consist of a small 40S subunit and a large 60S subunit. Together these subunits are composed of 4 RNA species and approximately 80 structurally distinct proteins. This gene encodes a ribosomal protein that is a component of the 60S subunit. The protein belongs to the L23P family of ribosomal proteins. It is located in the cytoplasm. The protein may be one of the target molecules involved in mediating growth inhibition by interferon. In yeast, the corresponding protein binds to a specific site on the 26S rRNA. This gene is co-transcribed with the U42A, U42B, U101A, and U101B small nucleolar RNA genes, which are located in its third, first, second, and fourth introns, respectively. As is typical for genes encoding ribosomal proteins, there are multiple processed pseudogenes of this gene dispersed through the genome.

Immunogen information

Gene ID:

6147

Uniprot

P62750

Synonyms:

RPL23A; L23A; MDA20

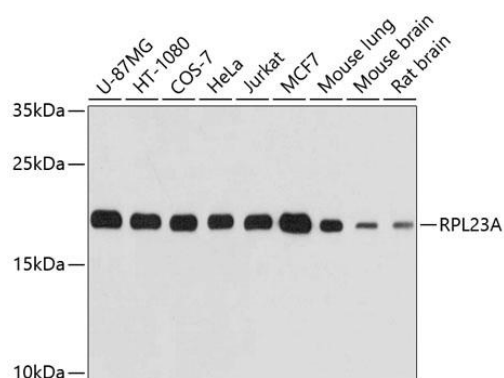
Immunogen:

Recombinant fusion protein containing a sequence corresponding to amino acids 1-156 of human RPL23A (NP_000975.2).

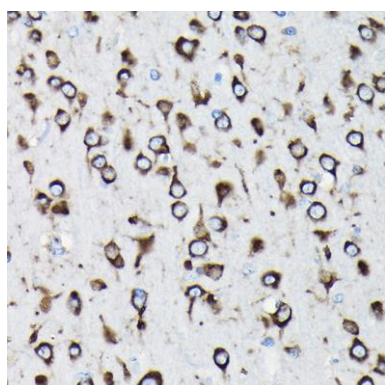
Storage:

Store at -20°C. Avoid freeze / thaw cycles. Buffer: PBS with 0.02% sodium azide, 50% glycerol, pH7.3.

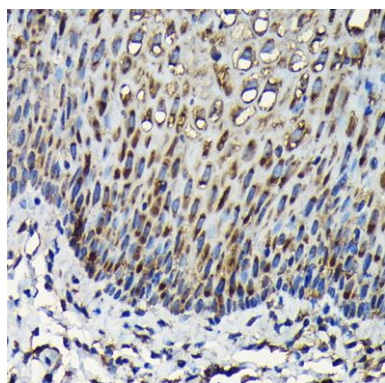
Product Images



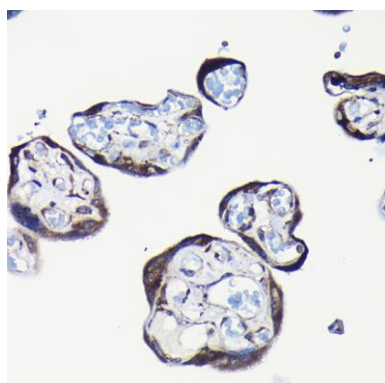
Western blot analysis of extracts of various cell lines, using RPL23A antibody (CAB4086) at 1:1000 dilution. Secondary antibody: HRP Goat Anti-Rabbit IgG (H+L) (CABS014) at 1:10000 dilution. Lysates/proteins: 25ug per lane. Blocking buffer: 3% nonfat dry milk in TBST. Detection: ECL Basic Kit (CABM00020). Exposure time: 10s.



Immunohistochemistry of paraffin-embedded rat brain using RPL23A Rabbit pAb (CAB4086) at dilution of 1:100 (40x lens).



Immunohistochemistry of paraffin-embedded human esophageal using RPL23A Rabbit pAb (CAB4086) at dilution of 1:100 (40x lens).



Immunohistochemistry of paraffin-embedded human placenta using RPL23A Rabbit pAb (CAB4086) at dilution of 1:100 (40x lens).