

SH3GL3 Rabbit Polyclonal Antibody



CAB4112

Product Information

Size:

20uL, 50uL, 100uL, 200uL

Observed MW:

39kDa

Calculated MW:

31kDa/38kDa/39kDa/40kDa

Applications:

WB IHC

Reactivity:

Human, Mouse, Rat

Antibody Information

Recommended dilutions:

WB 1:500 - 1:4000 IHC

1:100 - 1:200

Source:

Rabbit

Isotype:

IgG

Purification:

Affinity purification

Protein Background

Immunogen information

Gene ID:

6457

Uniprot

Q99963

Synonyms:

SH3GL3; CNSA3; EEN-B2; HsT19371; SH3D2C; SH3P13

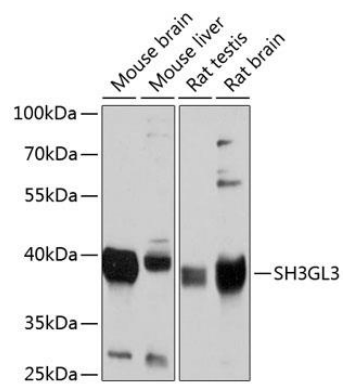
Immunogen:

Recombinant fusion protein containing a sequence corresponding to amino acids 1-270 of human SH3GL3 (NP_003018.3).

Storage:

Store at -20°C. Avoid freeze / thaw cycles. Buffer: PBS with 0.02% sodium azide, 50% glycerol, pH7.3.

Product Images



Western blot analysis of extracts of various cell lines, using SH3GL3 antibody (CAB4112) at 1:1000 dilution. Secondary antibody: HRP Goat Anti-Rabbit IgG (H+L) (CABS014) at 1:10000 dilution. Lysates/proteins: 25ug per lane. Blocking buffer: 3% nonfat dry milk in TBST. Detection: ECL Basic Kit (CABM00020). Exposure time: 1s.