

# XRCC1 Rabbit Monoclonal Antibody



CAB4135

---

## Product Information

**Size:**

20uL, 50uL, 100uL, 200uL

**Observed MW:**

82KDa

**Calculated MW:**

90kDa

**Applications:**

WB

**Reactivity:**

Human, Mouse, Rat

## Protein Background

The protein encoded by this gene is involved in the efficient repair of DNA single-strand breaks formed by exposure to ionizing radiation and alkylating agents. This protein interacts with DNA ligase III, polymerase beta and poly (ADP-ribose) polymerase to participate in the base excision repair pathway. It may play a role in DNA processing during meiosis and recombination in germ cells. A rare microsatellite polymorphism in this gene is associated with cancer in patients of varying radiosensitivity. [provided by RefSeq, Jul 2008]

## Immunogen information

**Gene ID:**

7515

**Uniprot**

P18887

**Synonyms:**

RCC

## Antibody Information

**Recommended dilutions:**

WB 1:500 - 1:2000

**Source:**

Rabbit

**Isotype:**

IgG

**Purification:**

Affinity purification

**Immunogen:**

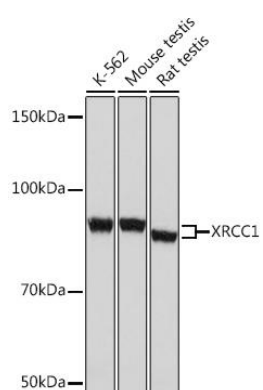
A synthesized peptide derived from human XRCC1

**Storage:**

Store at -20°C. Avoid freeze / thaw cycles. Buffer: PBS with 0.02% sodium azide, 0.05% BSA, 50% glycerol, pH7.3.

## Product Images

---



Western blot - XRCC1 Rabbit mAb (CAB4135)