

KMT5A / SETD8 Rabbit Monoclonal Antibody



CAB4136

Product Information

Size:

20uL, 50uL, 100uL, 200uL

Observed MW:

49KDa

Calculated MW:

50kDa

Applications:

WB

Reactivity:

Human, Mouse

Protein Background

The protein encoded by this gene is a protein-lysine N-methyltransferase that can monomethylate Lys-20 of histone H4 to effect transcriptional repression of some genes. The encoded protein is required for cell proliferation and plays a role in chromatin condensation. [provided by RefSeq, May 2016]

Immunogen information

Gene ID:

387893

Uniprot

Q9NQR1

Synonyms:

PR-Set7; SET07; SET8; SETD8

Antibody Information

Recommended dilutions:

WB 1:500 - 1:2000

Source:

Rabbit

Isotype:

IgG

Purification:

Affinity purification

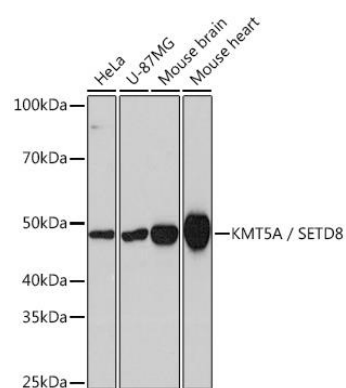
Immunogen:

A synthesized peptide derived from human KMT5A / SETD8

Storage:

Store at -20°C. Avoid freeze / thaw cycles. Buffer: PBS with 0.02% sodium azide, 0.05% BSA, 50% glycerol, pH7.3.

Product Images



Western blot - KMT5A / SETD8 Rabbit mAb (CAB4136)