

# TCF12 Rabbit Polyclonal Antibody



CAB4146

## Product Information

### Size:

20uL, 50uL, 100uL, 200uL

### Observed MW:

68kDa

### Calculated MW:

48kDa/55kDa/72kDa/75kDa

### Applications:

WB

### Reactivity:

Human, Mouse, Rat

## Protein Background

The protein encoded by this gene is a member of the basic helix-loop-helix (bHLH) E-protein family that recognizes the consensus binding site (E-box) CANNTG. This encoded protein is expressed in many tissues, among them skeletal muscle, thymus, B- and T-cells, and may participate in regulating lineage-specific gene expression through the formation of heterodimers with other bHLH E-proteins. Several alternatively spliced transcript variants of this gene have been described, but the full-length nature of some of these variants has not been determined.

## Immunogen information

### Gene ID:

6938

### Uniprot

Q99081

### Synonyms:

TCF12; CRS3; HEB; HTF4; HsT17266; TCF-12; bHLHb20

## Antibody Information

### Recommended dilutions:

WB 1:200 - 1:1000

### Source:

Rabbit

### Isotype:

IgG

### Purification:

Affinity purification

### Immunogen:

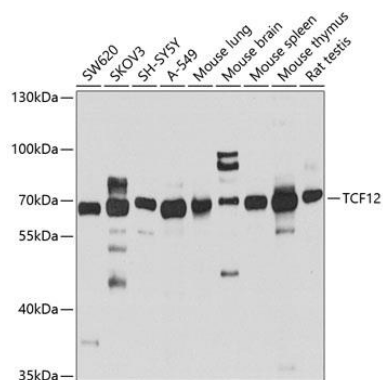
Recombinant fusion protein containing a sequence corresponding to amino acids 443-682 of human TCF12 (NP\_003196.1).

### Storage:

Store at -20°C. Avoid freeze / thaw cycles. Buffer: PBS with 0.02% sodium azide, 50% glycerol, pH7.3.

## Product Images

---



Western blot analysis of extracts of various cell lines, using TCF12 antibody (CAB4146) at 1:1000 dilution. Secondary antibody: HRP Goat Anti-Rabbit IgG (H+L) (CABS014) at 1:10000 dilution. Lysates/proteins: 25ug per lane. Blocking buffer: 3% nonfat dry milk in TBST. Detection: ECL Enhanced Kit (CABM00021). Exposure time: 30s.