

# BMP15 Rabbit Monoclonal Antibody



CAB4148

---

## Product Information

### Size:

20uL, 50uL, 100uL, 200uL

### Observed MW:

50KDa

### Calculated MW:

50kDa

### Applications:

WB

### Reactivity:

Human, Mouse, Rat

## Antibody Information

### Recommended dilutions:

WB 1:500 - 1:2000

### Source:

Rabbit

### Isotype:

IgG

### Purification:

Affinity purification

## Protein Background

This gene encodes a secreted ligand of the TGF-beta (transforming growth factor-beta) superfamily of proteins. Ligands of this family bind various TGF-beta receptors leading to recruitment and activation of SMAD family transcription factors that regulate gene expression. The encoded preproprotein is proteolytically processed to generate subunits of a disulfide-linked homodimer, or alternatively, a heterodimer, with the related protein, growth differentiation factor 9 (GDF9). This protein plays a role in oocyte maturation and follicular development, through activation of granulosa cells. Defects in this gene are the cause of ovarian dysgenesis and are associated with premature ovarian failure. [provided by RefSeq, Aug 2016]

## Immunogen information

### Gene ID:

9210

### Uniprot

O95972

### Synonyms:

GDF9B; ODG2; POF4

### Immunogen:

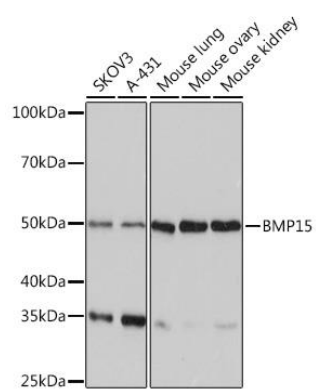
A synthesized peptide derived from human BMP15

### Storage:

Store at -20°C. Avoid freeze / thaw cycles. Buffer: PBS with 0.02% sodium azide, 0.05% BSA, 50% glycerol, pH7.3.

## Product Images

---



Western blot - BMP15 Rabbit mAb (CAB4148)