

# Gamma-Catenin Rabbit Monoclonal Antibody



CAB4157

---

## Product Information

### Size:

20uL, 50uL, 100uL, 200uL

### Observed MW:

82kDa

### Calculated MW:

82kDa

### Applications:

WB IHC IF

### Reactivity:

Human, Mouse, Rat

## Protein Background

This gene encodes a major cytoplasmic protein which is the only known constituent common to submembranous plaques of both desmosomes and intermediate junctions. This protein forms distinct complexes with cadherins and desmosomal cadherins and is a member of the catenin family since it contains a distinct repeating amino acid motif called the armadillo repeat. Mutation in this gene has been associated with Naxos disease. Alternative splicing occurs in this gene; however, not all transcripts have been fully described. [provided by RefSeq, Jul 2008]

## Immunogen information

### Gene ID:

3728

### Uniprot

P14923

### Synonyms:

ARVD12; CTNNG; DP3; DPIII; PDGB; PKGB

## Antibody Information

### Recommended dilutions:

WB 1:500 - 1:2000 IHC 1:50  
- 1:200 IF 1:50 - 1:200

### Source:

Rabbit

### Isotype:

IgG

### Purification:

Affinity purification

### Immunogen:

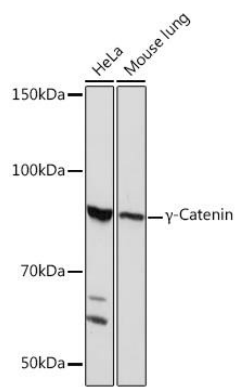
A synthesized peptide derived from human Gamma-Catenin

### Storage:

Store at -20°C. Avoid freeze / thaw cycles. Buffer: PBS with 0.02% sodium azide, 0.05% BSA, 50% glycerol, pH7.3.

## Product Images

---



Western blot - Gamma-Catenin Rabbit mAb (CAB4157)