

# DDAH2 Rabbit Monoclonal Antibody



CAB4159

## Product Information

### Size:

20uL, 50uL, 100uL, 200uL

### Observed MW:

30KDa

### Calculated MW:

30kDa

### Applications:

WB

### Reactivity:

Human, Mouse, Rat

## Protein Background

This gene encodes a dimethylarginine dimethylaminohydrolase. The encoded enzyme functions in nitric oxide generation by regulating the cellular concentrations of methylarginines, which in turn inhibit nitric oxide synthase activity. The protein may be localized to the mitochondria. Alternative splicing resulting in multiple transcript variants. [provided by RefSeq, Dec 2014]

## Immunogen information

### Gene ID:

23564

### Uniprot

O95865

### Synonyms:

DDAH; DDAHII; G6a; HEL-S-277; NG30

## Antibody Information

### Recommended dilutions:

WB 1:500 - 1:2000

### Source:

Rabbit

### Isotype:

IgG

### Purification:

Affinity purification

### Immunogen:

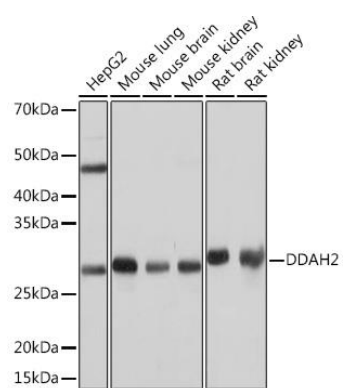
A synthesized peptide derived from human DDAH2

### Storage:

Store at -20°C. Avoid freeze / thaw cycles. Buffer: PBS with 0.02% sodium azide, 0.05% BSA, 50% glycerol, pH7.3.

## Product Images

---



Western blot - DDAH2 Rabbit mAb (CAB4159)