

UBE2L3 Rabbit Polyclonal Antibody



CAB4175

Product Information

Size:

20uL, 50uL, 100uL, 200uL

Observed MW:

18kDa

Calculated MW:

14kDa/17kDa/24kDa

Applications:

WB IHC IF

Reactivity:

Human, Mouse, Rat

Protein Background

The modification of proteins with ubiquitin is an important cellular mechanism for targeting abnormal or short-lived proteins for degradation. Ubiquitination involves at least three classes of enzymes: ubiquitin-activating enzymes (E1s), ubiquitin-conjugating enzymes (E2s) and ubiquitin-protein ligases (E3s). This gene encodes a member of the E2 ubiquitin-conjugating enzyme family. This enzyme is demonstrated to participate in the ubiquitination of p53, c-Fos, and the NF- κ B precursor p105 in vitro. Several alternatively spliced transcript variants have been found for this gene.

Immunogen information

Gene ID:

7332

Uniprot

P68036

Synonyms:

UBE2L3; E2-F1; L-UBC; UBCH7; UbcM4

Antibody Information

Recommended dilutions:

WB 1:1000 - 1:2000 IHC
1:50 - 1:100 IF 1:50 - 1:200

Source:

Rabbit

Isotype:

IgG

Purification:

Affinity purification

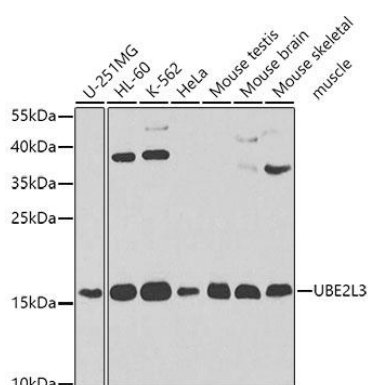
Immunogen:

Recombinant fusion protein containing a sequence corresponding to amino acids 73-212 of human UBE2L3 (NP_001243284.1).

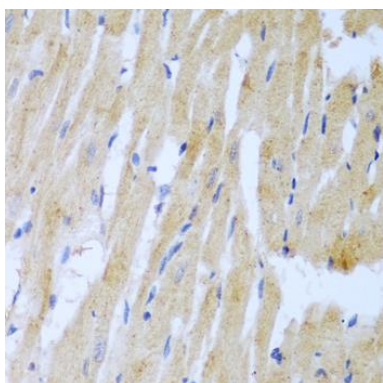
Storage:

Store at -20°C. Avoid freeze / thaw cycles. Buffer: PBS with 0.02% sodium azide, 50% glycerol, pH7.3.

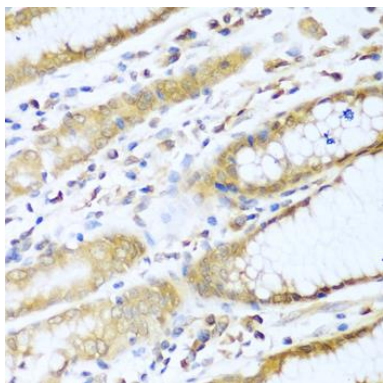
Product Images



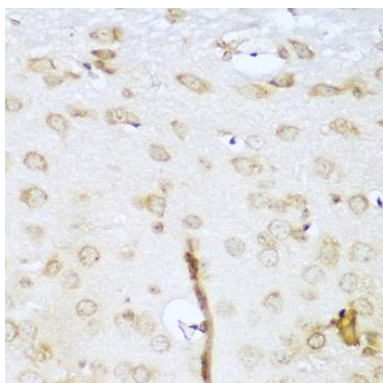
Western blot analysis of extracts of various cell lines, using UBE2L3 antibody (CAB4175) at 1:1000 dilution. Secondary antibody: HRP Goat Anti-Rabbit IgG (H+L) (CABS014) at 1:10000 dilution. Lysates/proteins: 25ug per lane. Blocking buffer: 3% nonfat dry milk in TBST. Detection: ECL Enhanced Kit (CABM00021). Exposure time: 60s.



Immunohistochemistry of paraffin-embedded rat heart using UBE2L3 antibody (CAB4175) at dilution of 1:100 (40x lens).



Immunohistochemistry of paraffin-embedded human stomach using UBE2L3 antibody (CAB4175) at dilution of 1:100 (40x lens).



Immunohistochemistry of paraffin-embedded mouse brain using UBE2L3 antibody (CAB4175) at dilution of 1:100 (40x lens).