

# Estrogen Related Receptor alpha Rabbit Monoclonal Antibody CAB4176



---

## Product Information

**Size:**

20uL, 50uL, 100uL, 200uL

**Observed MW:**

50kDa

**Calculated MW:**

55kDa

**Applications:**

WB

**Reactivity:**

Human, Mouse

## Antibody Information

**Recommended dilutions:**

WB 1:500 - 1:2000

**Source:**

Rabbit

**Isotype:**

IgG

**Purification:**

Affinity purification

## Protein Background

The protein encoded by this gene is a nuclear receptor that is closely related to the estrogen receptor. This protein acts as a site-specific transcription regulator and has been also shown to interact with estrogen and the transcription factor TFIIIB by direct protein-protein contact. The binding and regulatory activities of this protein have been demonstrated in the regulation of a variety of genes including lactoferrin, osteopontin, medium-chain acyl coenzyme A dehydrogenase (MCAD) and thyroid hormone receptor genes. A processed pseudogene of ESRRA is located on chromosome 13q12.1. Alternatively spliced transcript variants have been found for this gene. [provided by RefSeq, Sep 2013]

## Immunogen information

**Gene ID:**

2101

**Uniprot**

P11474

**Synonyms:**

ERR1; ERRa; ERRalpha; ESRL1; NR3B1

**Immunogen:**

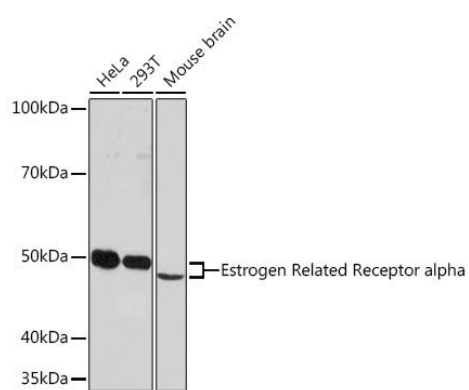
A synthesized peptide derived from human Estrogen Related Receptor alpha

**Storage:**

Store at -20°C. Avoid freeze / thaw cycles. Buffer: PBS with 0.02% sodium azide, 0.05% BSA, 50% glycerol, pH7.3.

## Product Images

---



Western blot - Estrogen Related Receptor alpha Rabbit mAb (CAB4176)