

Emerin Rabbit Monoclonal Antibody



CAB4187

Product Information

Size:

20uL, 50uL, 100uL, 200uL

Observed MW:

30KDa/35KDa

Calculated MW:

29kDa

Applications:

WB IHC IF

Reactivity:

Human, Mouse, Rat

Protein Background

Emerin is a serine-rich nuclear membrane protein and a member of the nuclear lamina-associated protein family. It mediates membrane anchorage to the cytoskeleton. Dreifuss-Emery muscular dystrophy is an X-linked inherited degenerative myopathy resulting from mutation in the emerin gene. [provided by RefSeq, Jul 2008]

Immunogen information

Gene ID:

2010

Uniprot

P50402

Synonyms:

EDMD; LEMD5; STA

Antibody Information

Recommended dilutions:

WB 1:500 - 1:2000 IHC 1:50
- 1:200 IF 1:50 - 1:200

Source:

Rabbit

Isotype:

IgG

Purification:

Affinity purification

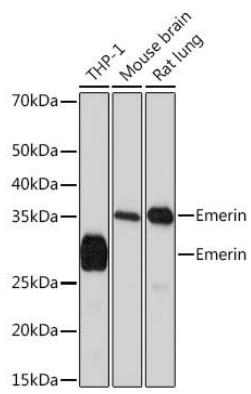
Immunogen:

A synthesized peptide derived from human Emerin

Storage:

Store at -20°C. Avoid freeze / thaw cycles. Buffer: PBS with 0.02% sodium azide, 0.05% BSA, 50% glycerol, pH7.3.

Product Images



Western blot - Emerin Rabbit mAb (CAB4187)