

ARHGEF5 Rabbit Polyclonal Antibody



CAB4196

Product Information

Size:

20uL, 50uL, 100uL, 200uL

Observed MW:

176kDa

Calculated MW:

60kDa/176kDa

Applications:

WB IHC IF

Reactivity:

Human, Mouse, Rat

Protein Background

Rho GTPases play a fundamental role in numerous cellular processes initiated by extracellular stimuli that work through G protein coupled receptors. The encoded protein may form a complex with G proteins and stimulate Rho-dependent signals. This protein may be involved in the control of cytoskeletal organization.

Immunogen information

Gene ID:

7984

Uniprot

Q12774

Synonyms:

ARHGEF5; GEF5; P60; TIM; TIM1

Antibody Information

Recommended dilutions:

WB 1:500 - 1:2000 IHC 1:50
- 1:100 IF 1:50 - 1:200

Source:

Rabbit

Isotype:

IgG

Purification:

Affinity purification

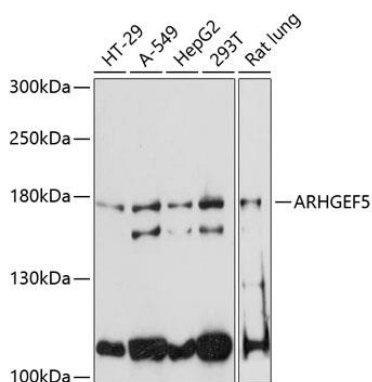
Immunogen:

Recombinant fusion protein containing a sequence corresponding to amino acids 1248-1597 of human ARHGEF5 (NP_005426.2).

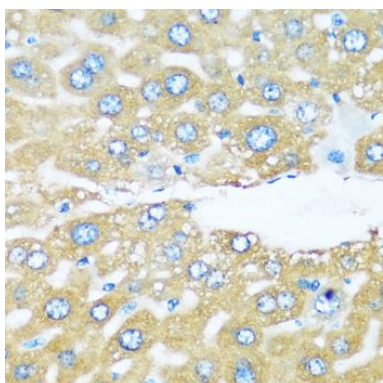
Storage:

Store at -20°C. Avoid freeze / thaw cycles. Buffer: PBS with 0.02% sodium azide, 50% glycerol, pH7.3.

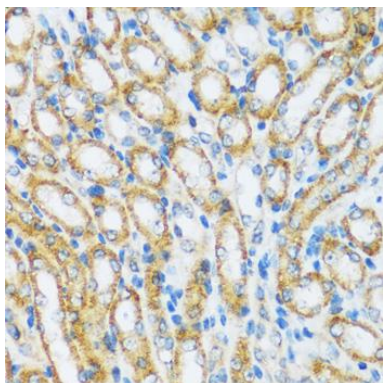
Product Images



Western blot analysis of extracts of various cell lines, using ARHGEF5 antibody (CAB4196) at 1:3000 dilution. Secondary antibody: HRP Goat Anti-Rabbit IgG (H+L) (CABS014) at 1:10000 dilution. Lysates/proteins: 25ug per lane. Blocking buffer: 3% nonfat dry milk in TBST. Detection: ECL Enhanced Kit (CABM00021). Exposure time: 60s.



Immunohistochemistry of paraffin-embedded mouse liver using ARHGEF5 antibody (CAB4196) at dilution of 1:100 (40x lens).



Immunohistochemistry of paraffin-embedded mouse kidney using ARHGEF5 antibody (CAB4196) at dilution of 1:100 (40x lens).