

# UBL4A Rabbit Polyclonal Antibody



CAB4211

---

## Product Information

### Size:

20uL, 50uL, 100uL, 200uL

### Observed MW:

14-16kDa

### Calculated MW:

17kDa

### Applications:

WB IP

### Reactivity:

Human, Mouse, Rat

## Antibody Information

### Recommended dilutions:

WB 1:200 - 1:1000 IP 1:50 - 1:200

### Source:

Rabbit

### Isotype:

IgG

### Purification:

Affinity purification

## Protein Background

### Immunogen information

#### Gene ID:

8266

#### Uniprot

P11441

#### Synonyms:

UBL4A; DX254E; DXS254E; G6PD; GDX; GET5; MDY2; TMA24; UBL4

#### Immunogen:

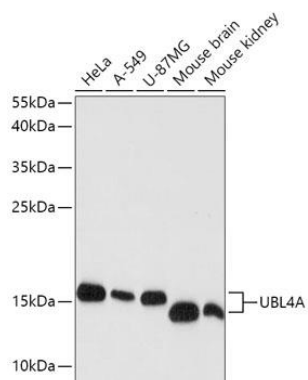
Recombinant fusion protein containing a sequence corresponding to amino acids 1-157 of human UBL4A (NP\_055050.1).

#### Storage:

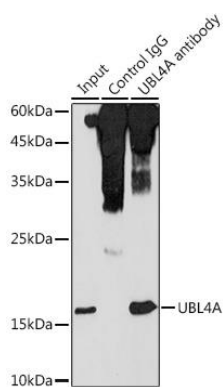
Store at -20°C. Avoid freeze / thaw cycles. Buffer: PBS with 0.02% sodium azide, 50% glycerol, pH7.3.

## Product Images

---



Western blot analysis of extracts of various cell lines, using UBL4A antibody (CAB4211) at 1:1000 dilution. Secondary antibody: HRP Goat Anti-Rabbit IgG (H+L) (CABS014) at 1:10000 dilution. Lysates/proteins: 25ug per lane. Blocking buffer: 3% nonfat dry milk in TBST. Detection: ECL Basic Kit (CABM00020). Exposure time: 90s.



Immunoprecipitation analysis of 300ug extracts of HeLa cells using 3ug UBL4A antibody (CAB4211). Western blot was performed from the immunoprecipitate using UBL4A antibody (CAB4211) at a dilution of 1:1000.