

POLD1 Rabbit Monoclonal Antibody



CAB4218

Product Information

Size:

20uL, 50uL, 100uL, 200uL

Observed MW:

130KDa

Calculated MW:

124kDa

Applications:

WB

Reactivity:

Human, Mouse, Rat

Protein Background

This gene encodes the 125-kDa catalytic subunit of DNA polymerase delta. DNA polymerase delta possesses both polymerase and 3' to 5' exonuclease activity and plays a critical role in DNA replication and repair. Alternatively spliced transcript variants have been observed for this gene, and a pseudogene of this gene is located on the long arm of chromosome 6. [provided by RefSeq, Mar 2012]

Immunogen information

Gene ID:

5424

Uniprot

P28340

Synonyms:

CDC2; CRCS10; MDPL; POLD

Antibody Information

Recommended dilutions:

WB 1:500 - 1:2000

Source:

Rabbit

Isotype:

IgG

Purification:

Affinity purification

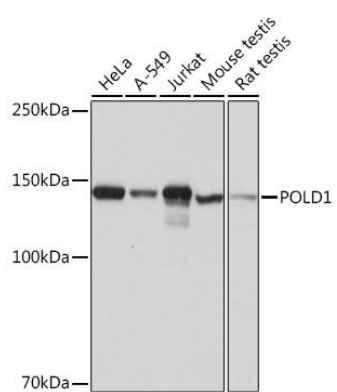
Immunogen:

A synthesized peptide derived from human POLD1

Storage:

Store at -20°C. Avoid freeze / thaw cycles. Buffer: PBS with 0.02% sodium azide, 0.05% BSA, 50% glycerol, pH7.3.

Product Images



Western blot - POLD1 Rabbit mAb (CAB4218)