

Reptin / RUVBL2 Rabbit Monoclonal Antibody



CAB4227

Product Information

Size:

20uL, 50uL, 100uL, 200uL

Observed MW:

50KDa

Calculated MW:

48kDa

Applications:

WB

Reactivity:

Human, Mouse, Rat

Antibody Information

Recommended dilutions:

WB 1:500 - 1:2000

Source:

Rabbit

Isotype:

IgG

Purification:

Affinity purification

Protein Background

This gene encodes the second human homologue of the bacterial RuvB gene. Bacterial RuvB protein is a DNA helicase essential for homologous recombination and DNA double-strand break repair. Functional analysis showed that this gene product has both ATPase and DNA helicase activities. This gene is physically linked to the CGB/LHB gene cluster on chromosome 19q13.3, and is very close (55 nt) to the LHB gene, in the opposite orientation. [provided by RefSeq, Jul 2008]

Immunogen information

Gene ID:

10856

Uniprot

Q9Y230

Synonyms:

CGI-46; ECP-51; ECP51; INO80J; REPTIN; RVB2; TAP54-beta; TIH2; TIP48; TIP49B

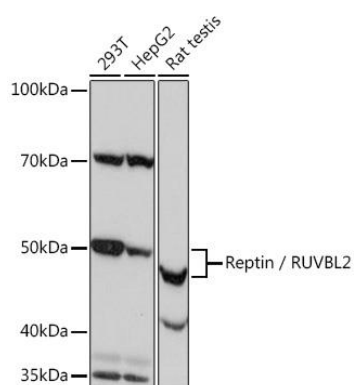
Immunogen:

A synthesized peptide derived from human Reptin / RUVBL2

Storage:

Store at -20°C. Avoid freeze / thaw cycles. Buffer: PBS with 0.02% sodium azide, 0.05% BSA, 50% glycerol, pH7.3.

Product Images



Western blot - Reptin / RUVBL2 Rabbit mAb (CAB4227)