

IFITM1 Rabbit Polyclonal Antibody



CAB4228

Product Information

Size:

20uL, 50uL, 100uL, 200uL

Observed MW:

17kDa

Calculated MW:

13kDa

Applications:

WB IHC

Reactivity:

Human, Mouse

Antibody Information

Recommended dilutions:

WB 1:200 - 1:2000 IHC 1:50
- 1:200

Source:

Rabbit

Isotype:

IgG

Purification:

Affinity purification

Protein Background

Immunogen information

Gene ID:

8519

Uniprot

P13164

Synonyms:

IFITM1; 9-27; CD225; DSPA2a; IFI17; LEU13

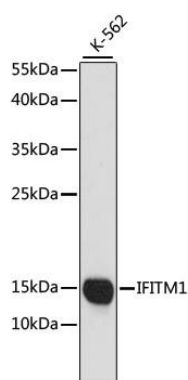
Immunogen:

A synthetic peptide corresponding to a sequence within amino acids 50 to the C-terminus of human IFITM1 (NP_003632.3).

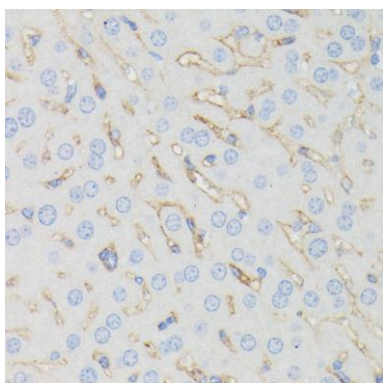
Storage:

Store at -20°C. Avoid freeze / thaw cycles. Buffer: PBS with 0.02% sodium azide, 50% glycerol, pH7.3.

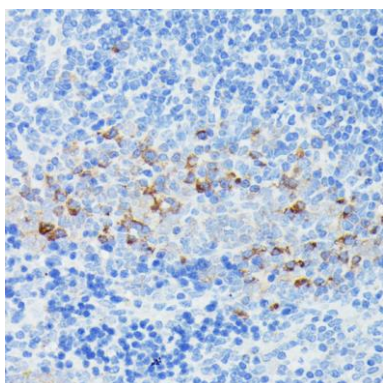
Product Images



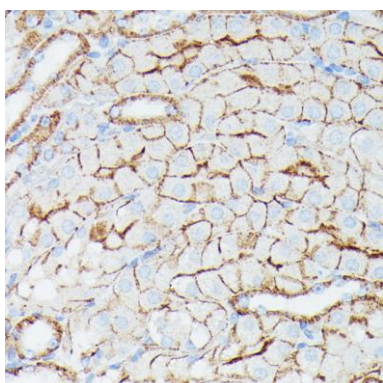
Western blot analysis of extracts of K-562 cells, using IFITM1 antibody (CAB4228) at 1:1000 dilution. Secondary antibody: HRP Goat Anti-Rabbit IgG (H+L) (CABS014) at 1:10000 dilution. Lysates/proteins: 25ug per lane. Blocking buffer: 3% nonfat dry milk in TBST. Detection: ECL Basic Kit (CABM00020). Exposure time: 90s.



Immunohistochemistry of paraffin-embedded mouse liver using IFITM1 antibody (CAB4228) at dilution of 1:100 (40x lens).



Immunohistochemistry of paraffin-embedded mouse spleen using IFITM1 antibody (CAB4228) at dilution of 1:100 (40x lens).



Immunohistochemistry of paraffin-embedded mouse kidney using IFITM1 antibody (CAB4228) at dilution of 1:100 (40x lens).