

# EIF3G Rabbit Polyclonal Antibody



CAB4240

---

## Product Information

### Size:

20uL, 50uL, 100uL, 200uL

### Observed MW:

42kDa

### Calculated MW:

35kDa

### Applications:

WB IF

### Reactivity:

Human, Mouse, Rat

## Antibody Information

### Recommended dilutions:

WB 1:200 - 1:2000 IF 1:50 - 1:200

### Source:

Rabbit

### Isotype:

IgG

### Purification:

Affinity purification

## Protein Background

### Immunogen information

#### Gene ID:

8666

#### Uniprot

O75821

#### Synonyms:

EIF3G; EIF3-P42; EIF3S4; eIF3-delta; eIF3-p44

#### Immunogen:

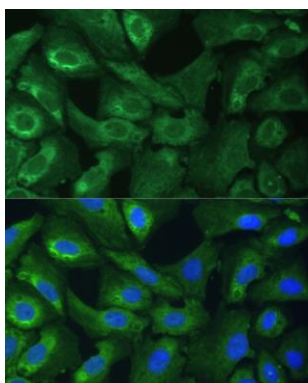
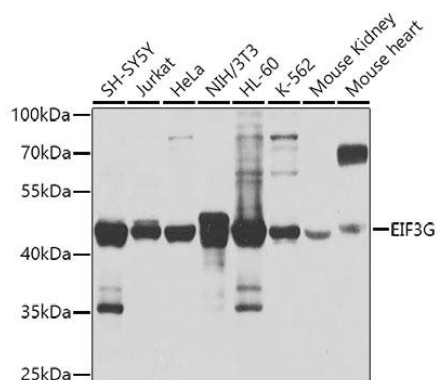
Recombinant fusion protein containing a sequence corresponding to amino acids 1-320 of human EIF3G (NP\_003746.2).

#### Storage:

Store at -20°C. Avoid freeze / thaw cycles. Buffer: PBS with 0.02% sodium azide, 50% glycerol, pH7.3.

## Product Images

---



Western blot analysis of extracts of various cell lines, using EIF3G antibody (CAB4240) at 1:1000 dilution. Secondary antibody: HRP Goat Anti-Rabbit IgG (H+L) (CABS014) at 1:10000 dilution. Lysates/proteins: 25ug per lane. Blocking buffer: 3% nonfat dry milk in TBST. Detection: ECL Basic Kit (CABM00020). Exposure time: 1s.

Immunofluorescence analysis of U-2 OS cells using EIF3G Polyclonal Antibody (CAB4240) at dilution of 1:100 (40x lens). Blue: DAPI for nuclear staining.