

# SIGLEC5 Rabbit Polyclonal Antibody



CAB4250

---

## Product Information

**Size:**

20uL, 50uL, 100uL, 200uL

**Observed MW:**

140kDa

**Calculated MW:**

60kDa

**Applications:**

WB

**Reactivity:**

Human

## Protein Background

This gene encodes a member of the sialic acid-binding immunoglobulin-like lectin (Siglec) family. These cell surface lectins are characterized by structural motifs in the immunoglobulin (Ig)-like domains and sialic acid recognition sites in the first Ig V set domain. The encoded protein is a member of the CD33-related subset of Siglecs and inhibits the activation of several cell types including monocytes, macrophages and neutrophils. Binding of group B Streptococcus (GBS) to the encoded protein plays a role in GBS immune evasion.

## Immunogen information

**Gene ID:**

8778

**Uniprot**

O15389

**Synonyms:**

SIGLEC5; CD170; CD33L2; OB-BP2; OBBP2; SIGLEC-5

## Antibody Information

**Recommended dilutions:**

WB 1:500 - 1:2000

**Source:**

Rabbit

**Isotype:**

IgG

**Purification:**

Affinity purification

**Immunogen:**

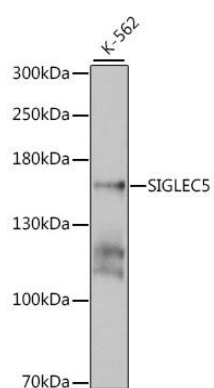
Recombinant fusion protein containing a sequence corresponding to amino acids 452-551 of human SIGLEC5 (NP\_003821.1).

**Storage:**

Store at -20°C. Avoid freeze / thaw cycles. Buffer: PBS with 0.02% sodium azide, 50% glycerol, pH7.3.

## Product Images

---



Western blot analysis of extracts of K-562 cells, using SIGLEC5 antibody (CAB4250) at 1:1000 dilution. Secondary antibody: HRP Goat Anti-Rabbit IgG (H+L) (CABS014) at 1:10000 dilution. Lysates/proteins: 25ug per lane. Blocking buffer: 3% nonfat dry milk in TBST. Detection: ECL Basic Kit (CABM00020). Exposure time: 1s.