

CD26 Rabbit Monoclonal Antibody



CAB4252

Product Information

Size:

20uL, 50uL, 100uL, 200uL

Observed MW:

105KDa

Calculated MW:

110kDa

Applications:

WB

Reactivity:

Human, Mouse, Rat

Protein Background

The protein encoded by this gene is identical to adenosine deaminase complexing protein-2, and to the T-cell activation antigen CD26. It is an intrinsic membrane glycoprotein and a serine exopeptidase that cleaves X-proline dipeptides from the N-terminus of polypeptides. [provided by RefSeq, Jul 2008]

Immunogen information

Gene ID:

1803

Uniprot

P27487

Synonyms:

ADABP; ADCP2; CD26; DPPIV; TP103

Antibody Information

Recommended dilutions:

WB 1:500 - 1:2000

Source:

Rabbit

Isotype:

IgG

Purification:

Affinity purification

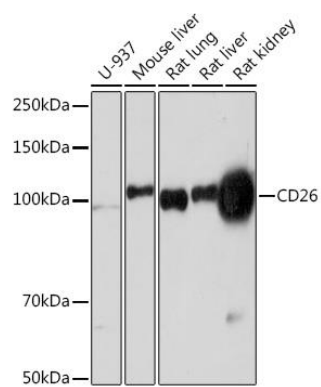
Immunogen:

A synthesized peptide derived from human CD26

Storage:

Store at -20°C. Avoid freeze / thaw cycles. Buffer: PBS with 0.02% sodium azide, 0.05% BSA, 50% glycerol, pH7.3.

Product Images



Western blot - CD26 Rabbit mAb (CAB4252)