

# RRM1 Rabbit Monoclonal Antibody



CAB4259

## Product Information

### Size:

20uL, 50uL, 100uL, 200uL

### Observed MW:

90KDa

### Calculated MW:

90kDa

### Applications:

WB

### Reactivity:

Human, Mouse, Rat

## Protein Background

This gene encodes the large and catalytic subunit of ribonucleotide reductase, an enzyme essential for the conversion of ribonucleotides into deoxyribonucleotides. A pool of available deoxyribonucleotides is important for DNA replication during S phase of the cell cycle as well as multiple DNA repair processes. Alternative splicing results in multiple transcript variants. [provided by RefSeq, Dec 2015]

## Immunogen information

### Gene ID:

6240

### Uniprot

P23921

### Synonyms:

R1; RIR1; RR1

## Antibody Information

### Recommended dilutions:

WB 1:500 - 1:2000

### Source:

Rabbit

### Isotype:

IgG

### Purification:

Affinity purification

### Immunogen:

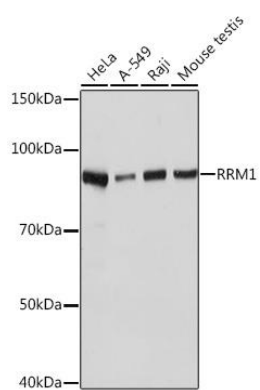
A synthesized peptide derived from human RRM1

### Storage:

Store at -20°C. Avoid freeze / thaw cycles. Buffer: PBS with 0.02% sodium azide, 0.05% BSA, 50% glycerol, pH7.3.

## Product Images

---



Western blot - RRM1 Rabbit mAb (CAB4259)