

Cyclin E2 Rabbit Polyclonal Antibody



CAB4272

Product Information

Size:

20uL, 50uL, 100uL, 200uL

Observed MW:

47kDa

Calculated MW:

41kDa/46kDa

Applications:

WB IHC

Reactivity:

Human, Mouse, Rat

Antibody Information

Recommended dilutions:

WB 1:500 - 1:2000 IHC 1:50
- 1:100

Source:

Rabbit

Isotype:

IgG

Purification:

Affinity purification

Protein Background

The protein encoded by this gene belongs to the highly conserved cyclin family, whose members are characterized by a dramatic periodicity in protein abundance through the cell cycle. Cyclins function as regulators of CDK kinases. Different cyclins exhibit distinct expression and degradation patterns which contribute to the temporal coordination of each mitotic event. This cyclin forms a complex with and functions as a regulatory subunit of CDK2. This cyclin has been shown to specifically interact with CIP/KIP family of CDK inhibitors, and plays a role in cell cycle G1/S transition. The expression of this gene peaks at the G1-S phase and exhibits a pattern of tissue specificity distinct from that of cyclin E1. A significantly increased expression level of this gene was observed in tumor-derived cells.

Immunogen information

Gene ID:

9134

Uniprot

O96020

Synonyms:

CCNE2; CYCE2; cyclin E2

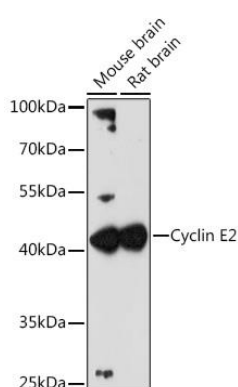
Immunogen:

A synthetic peptide corresponding to a sequence within amino acids 300 to the C-terminus of human Cyclin E2 (NP_477097.1).

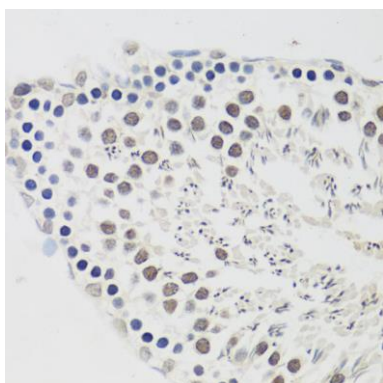
Storage:

Store at -20°C. Avoid freeze / thaw cycles. Buffer: PBS with 0.02% sodium azide, 50% glycerol, pH7.3.

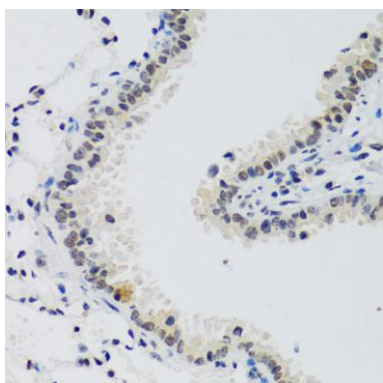
Product Images



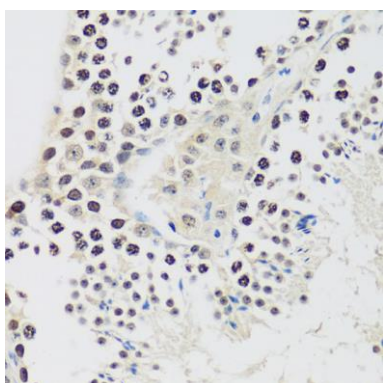
Western blot analysis of extracts of various cell lines, using Cyclin E2 antibody (CAB4272) at 1:3000 dilution. Secondary antibody: HRP Goat Anti-Rabbit IgG (H+L) (CABS014) at 1:10000 dilution. Lysates/proteins: 25ug per lane. Blocking buffer: 3% nonfat dry milk in TBST. Detection: ECL Enhanced Kit (CABM00021). Exposure time: 90s.



Immunohistochemistry of paraffin-embedded rat testis using Cyclin E2 antibody (CAB4272) at dilution of 1:100 (40x lens).



Immunohistochemistry of paraffin-embedded mouse lung using Cyclin E2 antibody (CAB4272) at dilution of 1:100 (40x lens).



Immunohistochemistry of paraffin-embedded mouse testis using Cyclin E2 antibody (CAB4272) at dilution of 1:100 (40x lens).