

# [KO Validated] ARHGEF1 Rabbit Polyclonal Antibody

## CAB4274



### Product Information

**Size:**

20uL, 50uL, 100uL, 200uL

**Observed MW:**

102kDa

**Calculated MW:**

98kDa/102kDa/104kDa/105kDa

**Applications:**

WB IHC IF

**Reactivity:**

Human, Rat

### Protein Background

Rho GTPases play a fundamental role in numerous cellular processes that are initiated by extracellular stimuli that work through G protein coupled receptors. The encoded protein may form complex with G proteins and stimulate Rho-dependent signals. Multiple alternatively spliced transcript variants have been found for this gene, but the full-length nature of some variants has not been defined.

### Immunogen information

**Gene ID:**

9138

**Uniprot**

Q92888

**Synonyms:**

ARHGEF1; GEF1; LBCL2; LSC; P115-RHOGEF; SUB1.5

### Antibody Information

**Recommended dilutions:**

WB 1:500 - 1:2000 IHC 1:50  
- 1:100 IF 1:50 - 1:200

**Source:**

Rabbit

**Isotype:**

IgG

**Purification:**

Affinity purification

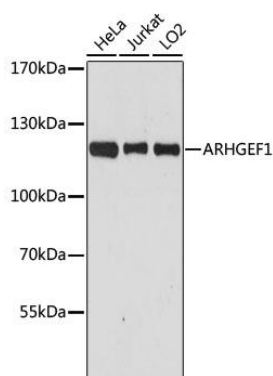
**Immunogen:**

Recombinant fusion protein containing a sequence corresponding to amino acids 783-912 of human ARHGEF1 (NP\_004697.2).

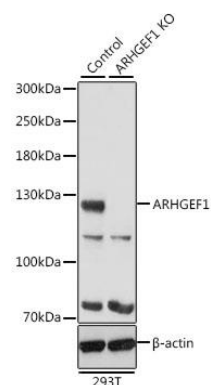
**Storage:**

Store at -20°C. Avoid freeze / thaw cycles. Buffer: PBS with 0.02% sodium azide, 50% glycerol, pH7.3.

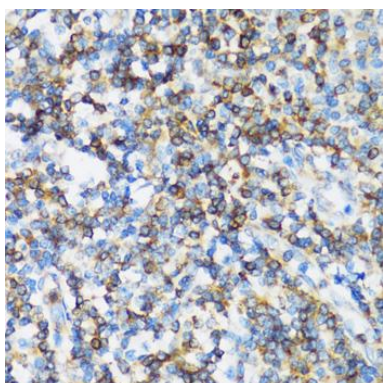
## Product Images



Western blot analysis of extracts of various cell lines, using ARHGEF1 antibody (CAB4274) at 1:3000 dilution. Secondary antibody: HRP Goat Anti-Rabbit IgG (H+L) (CABS014) at 1:10000 dilution. Lysates/proteins: 25ug per lane. Blocking buffer: 3% nonfat dry milk in TBST. Detection: ECL Basic Kit (CABM00020). Exposure time: 90s.



Western blot analysis of extracts from normal (control) and ARHGEF1 knockout (KO) 293T cells, using ARHGEF1 antibody (CAB4274) at 1:500 dilution. Secondary antibody: HRP Goat Anti-Rabbit IgG (H+L) (CABS014) at 1:10000 dilution. Lysates/proteins: 25ug per lane. Blocking buffer: 3% nonfat dry milk in TBST. Detection: ECL Basic Kit (CABM00020). Exposure time: 10s.



Immunohistochemistry of paraffin-embedded human tonsil using ARHGEF1 antibody (CAB4274) at dilution of 1:100 (40x lens).