

SMARCC1/BAF155 Rabbit Monoclonal Antibody



CAB4275

Product Information

Size:

20uL, 50uL, 100uL, 200uL

Observed MW:

155KDa

Calculated MW:

155kDa

Applications:

WB IF

Reactivity:

Human, Mouse

Protein Background

The protein encoded by this gene is a member of the SWI/SNF family of proteins, whose members display helicase and ATPase activities and which are thought to regulate transcription of certain genes by altering the chromatin structure around those genes. The encoded protein is part of the large ATP-dependent chromatin remodeling complex SNF/SWI and contains a predicted leucine zipper motif typical of many transcription factors. [provided by RefSeq, Jul 2008]

Immunogen information

Gene ID:

6599

Uniprot

Q92922

Synonyms:

BAF155; CRACC1; Rsc8; SRG3; SWI3

Antibody Information

Recommended dilutions:

WB 1:500 - 1:2000 IF 1:50 - 1:200

Source:

Rabbit

Isotype:

IgG

Purification:

Affinity purification

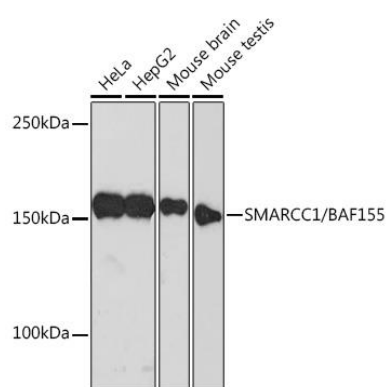
Immunogen:

A synthesized peptide derived from human SMARCC1/BAF155

Storage:

Store at -20°C. Avoid freeze / thaw cycles. Buffer: PBS with 0.02% sodium azide, 0.05% BSA, 50% glycerol, pH7.3.

Product Images



Western blot - SMARCC1/BAF155 Rabbit mAb (CAB4275)