

UBE2L6 Rabbit Polyclonal Antibody



CAB4282

Product Information

Size:

100uL, 200uL

Observed MW:

20kDa

Calculated MW:

10kDa/17kDa

Applications:

WB IHC

Reactivity:

Human

Protein Background

The modification of proteins with ubiquitin is an important cellular mechanism for targeting abnormal or short-lived proteins for degradation. Ubiquitination involves at least three classes of enzymes: ubiquitin-activating enzymes (E1s), ubiquitin-conjugating enzymes (E2s) and ubiquitin-protein ligases (E3s). This gene encodes a member of the E2 ubiquitin-conjugating enzyme family. This enzyme is highly similar in primary structure to the enzyme encoded by the UBE2L3 gene. Two alternatively spliced transcript variants encoding distinct isoforms have been found for this gene.

Immunogen information

Gene ID:

9246

Uniprot

O14933

Synonyms:

UBE2L6; RIG-B; UBCH8

Antibody Information

Recommended dilutions:

WB 1:500 - 1:2000 IHC 1:50
- 1:200

Source:

Rabbit

Isotype:

IgG

Immunogen:

A synthetic peptide of human UBE2L6

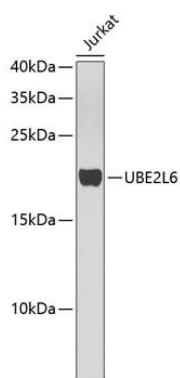
Storage:

Store at -20°C. Avoid freeze / thaw cycles. Buffer: PBS with 0.02% sodium azide, 50% glycerol, pH7.3.

Purification:

Affinity purification

Product Images



Western blot analysis of extracts of Jurkat cells, using UBE2L6 antibody (CAB4282). Secondary antibody: HRP Goat Anti-Rabbit IgG (H+L) (CABS014) at 1:10000 dilution. Lysates/proteins: 25ug per lane. Blocking buffer: 3% nonfat dry milk in TBST.