

SNAP29 Rabbit Polyclonal Antibody



CAB4290

Product Information

Size:

20uL, 50uL, 100uL, 200uL

Observed MW:

29kDa

Calculated MW:

28kDa

Applications:

WB IHC IP

Reactivity:

Human, Mouse, Rat

Protein Background

This gene, a member of the SNAP25 gene family, encodes a protein involved in multiple membrane trafficking steps. Two other members of this gene family, SNAP23 and SNAP25, encode proteins that bind a syntaxin protein and mediate synaptic vesicle membrane docking and fusion to the plasma membrane. The protein encoded by this gene binds tightly to multiple syntaxins and is localized to intracellular membrane structures rather than to the plasma membrane. While the protein is mostly membrane-bound, a significant fraction of it is found free in the cytoplasm. Use of multiple polyadenylation sites has been noted for this gene.

Immunogen information

Gene ID:

9342

Uniprot

O95721

Synonyms:

SNAP29; CEDNIK; SNAP-29

Antibody Information

Recommended dilutions:

WB 1:1000 - 1:4000 IHC
1:50 - 1:200 IP 1:50 - 1:200

Source:

Rabbit

Isotype:

IgG

Purification:

Affinity purification

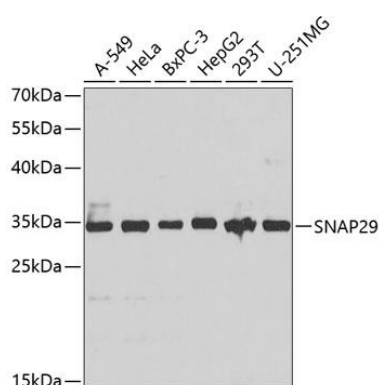
Immunogen:

Recombinant fusion protein containing a sequence corresponding to amino acids 1-258 of human SNAP29 (NP_004773.1).

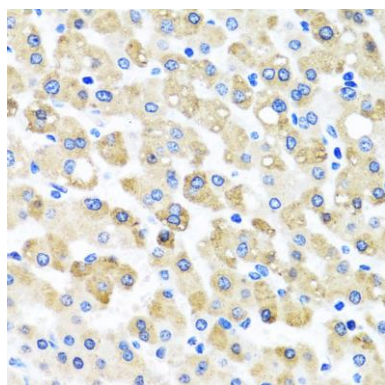
Storage:

Store at -20°C. Avoid freeze / thaw cycles. Buffer: PBS with 0.02% sodium azide, 50% glycerol, pH7.3.

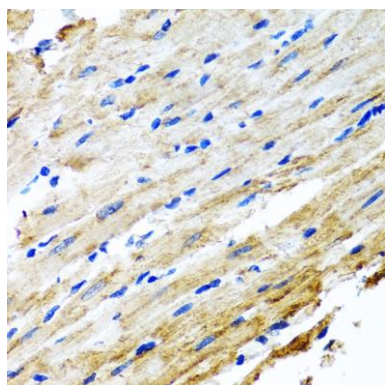
Product Images



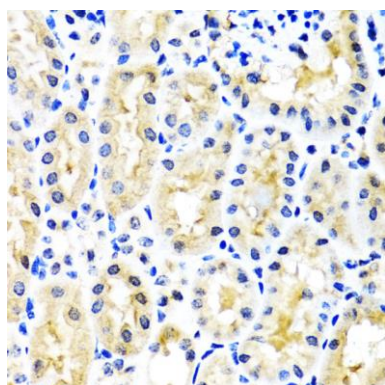
Western blot analysis of extracts of various cell lines, using SNAP29 antibody (CAB4290) at 1:1000 dilution. Secondary antibody: HRP Goat Anti-Rabbit IgG (H+L) (CABS014) at 1:10000 dilution. Lysates/proteins: 25ug per lane. Blocking buffer: 3% nonfat dry milk in TBST. Detection: ECL Basic Kit (CABM00020). Exposure time: 15s.



Immunohistochemistry of paraffin-embedded human liver damage using SNAP29 antibody (CAB4290) at dilution of 1:100 (40x lens).



Immunohistochemistry of paraffin-embedded rat heart using SNAP29 antibody (CAB4290) at dilution of 1:100 (40x lens).



Immunohistochemistry of paraffin-embedded mouse kidney using SNAP29 antibody (CAB4290) at dilution of 1:100 (40x lens).