

RPL23 Rabbit Polyclonal Antibody



CAB4292

Product Information

Size:

20uL, 50uL, 100uL, 200uL

Observed MW:

15kDa

Calculated MW:

14kDa

Applications:

WB IHC IF

Reactivity:

Human, Mouse, Rat

Antibody Information

Recommended dilutions:

WB 1:500 - 1:4000 IHC 1:50
- 1:200 IF 1:50 - 1:200

Source:

Rabbit

Isotype:

IgG

Purification:

Affinity purification

Protein Background

Ribosomes, the organelles that catalyze protein synthesis, consist of a small 40S subunit and a large 60S subunit. Together these subunits are composed of 4 RNA species and approximately 80 structurally distinct proteins. This gene encodes a ribosomal protein that is a component of the 60S subunit. The protein belongs to the L14P family of ribosomal proteins. It is located in the cytoplasm. This gene has been referred to as rpL17 because the encoded protein shares amino acid identity with ribosomal protein L17 from *Saccharomyces cerevisiae*; however, its official symbol is RPL23. As is typical for genes encoding ribosomal proteins, there are multiple processed pseudogenes of this gene dispersed through the genome.

Immunogen information

Gene ID:

9349

Uniprot

P62829

Synonyms:

RPL23; L23; rpL17

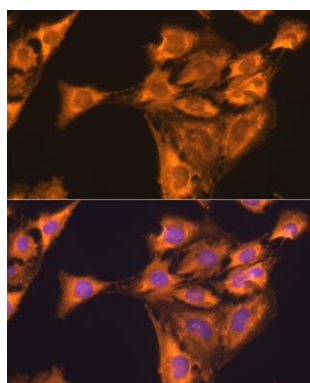
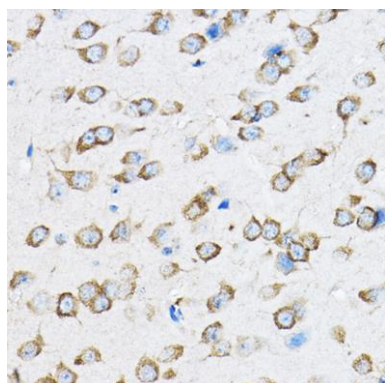
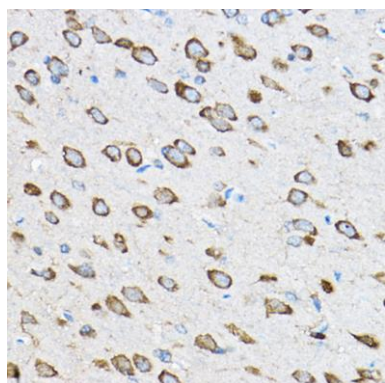
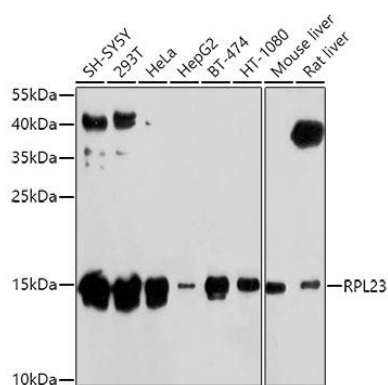
Immunogen:

Recombinant fusion protein containing a sequence corresponding to amino acids 1-140 of human RPL23 (NP_000969.1).

Storage:

Store at -20°C. Avoid freeze / thaw cycles. Buffer: PBS with 0.02% sodium azide, 50% glycerol, pH7.3.

Product Images



Western blot analysis of extracts of various cell lines, using RPL23 antibody (CAB4292) at 1:1000 dilution. Secondary antibody: HRP Goat Anti-Rabbit IgG (H+L) (CABS014) at 1:10000 dilution. Lysates/proteins: 25ug per lane. Blocking buffer: 3% nonfat dry milk in TBST. Detection: ECL Basic Kit (CABM00020). Exposure time: 5s.

Immunohistochemistry of paraffin-embedded rat brain using RPL23 Rabbit pAb (CAB4292) at dilution of 1:100 (40x lens).

Immunohistochemistry of paraffin-embedded mouse brain using RPL23 Rabbit pAb (CAB4292) at dilution of 1:100 (40x lens).

Immunofluorescence analysis of C6 cells using RPL23 antibody (CAB4292) at dilution of 1:100. Blue: DAPI for nuclear staining.