

# Aly Rabbit Monoclonal Antibody



CAB4298

---

## Product Information

### Size:

20uL, 50uL, 100uL, 200uL

### Observed MW:

27KDa

### Calculated MW:

27kDa

### Applications:

WB IHC

### Reactivity:

Human, Mouse, Rat

## Protein Background

The protein encoded by this gene is a heat stable, nuclear protein and functions as a molecular chaperone. It is thought to regulate dimerization, DNA binding, and transcriptional activity of basic region-leucine zipper (bZIP) proteins. [provided by RefSeq, Jul 2008]

## Immunogen information

### Gene ID:

10189

### Uniprot

Q86V81

### Synonyms:

ALY; ALY/REF; BEF; REF; THOC4

## Antibody Information

### Recommended dilutions:

WB 1:500 - 1:2000 IHC 1:50  
- 1:200

### Source:

Rabbit

### Isotype:

IgG

### Purification:

Affinity purification

### Immunogen:

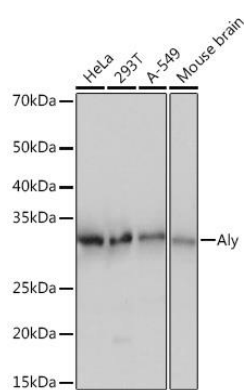
A synthesized peptide derived from human Aly

### Storage:

Store at -20°C. Avoid freeze / thaw cycles. Buffer: PBS with 0.02% sodium azide, 0.05% BSA, 50% glycerol, pH7.3.

## Product Images

---



Western blot - Aly Rabbit mAb (CAB4298)