

Placental alkaline phosphatase (PLAP) Rabbit Monoclonal Antibody

CAB4304



Product Information

Size:

20uL, 50uL, 100uL, 200uL

Observed MW:

70KDa

Calculated MW:

70kDa

Applications:

WB IHC

Reactivity:

Human, Mouse, Rat

Protein Background

The protein encoded by this gene is an alkaline phosphatase, a metalloenzyme that catalyzes the hydrolysis of phosphoric acid monoesters. It belongs to a multigene family composed of four alkaline phosphatase isoenzymes. The enzyme functions as a homodimer and has a catalytic site containing one magnesium and two zinc ions, which are required for its enzymatic function. The protein is primarily expressed in placental and endometrial tissue; however, strong ectopic expression has been detected in ovarian adenocarcinoma, serous cystadenocarcinoma, and other ovarian cancer cells. [provided by RefSeq, Jan 2015]

Immunogen information

Gene ID:

250

Uniprot

P05187

Synonyms:

ALP; PALP; PLAP; PLAP-1

Antibody Information

Recommended dilutions:

WB 1:500 - 1:2000 IHC 1:50 - 1:200

Source:

Rabbit

Isotype:

IgG

Purification:

Affinity purification

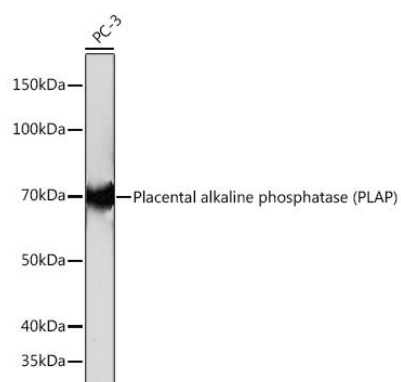
Immunogen:

A synthesized peptide derived from human Placental alkaline phosphatase (PLAP)

Storage:

Store at -20°C. Avoid freeze / thaw cycles. Buffer: PBS with 0.02% sodium azide, 0.05% BSA, 50% glycerol, pH7.3.

Product Images



Western blot - Placental alkaline phosphatase (PLAP) Rabbit mAb (CAB4304)