

# EIF4E2 Rabbit Polyclonal Antibody



CAB4305

---

## Product Information

### Size:

20uL, 50uL, 100uL, 200uL

### Observed MW:

28kDa

### Calculated MW:

27kDa/28kDa

### Applications:

WB IHC IF

### Reactivity:

Human, Mouse, Rat

## Antibody Information

### Recommended dilutions:

WB 1:200 - 1:2000 IHC 1:50  
- 1:200 IF 1:50 - 1:200

### Source:

Rabbit

### Isotype:

IgG

### Purification:

Affinity purification

## Protein Background

### Immunogen information

#### Gene ID:

9470

#### Uniprot

O60573

#### Synonyms:

EIF4E2; 4E-LP; 4EHP; EIF4EL3; IF4e; h4EHP

#### Immunogen:

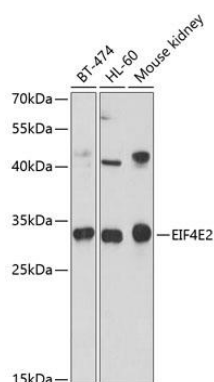
Recombinant fusion protein containing a sequence corresponding to amino acids 1-240 of human EIF4E2 (NP\_004837.1).

#### Storage:

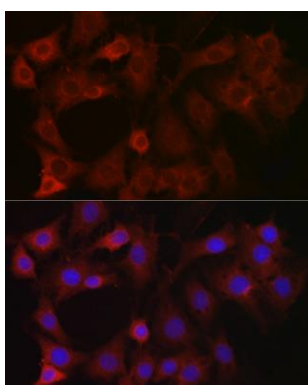
Store at -20°C. Avoid freeze / thaw cycles. Buffer: PBS with 0.02% sodium azide, 50% glycerol, pH7.3.

## Product Images

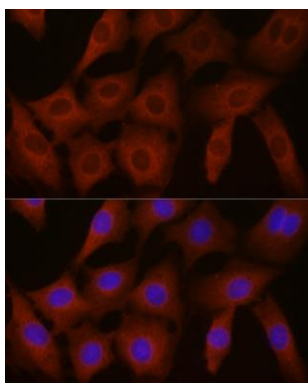
---



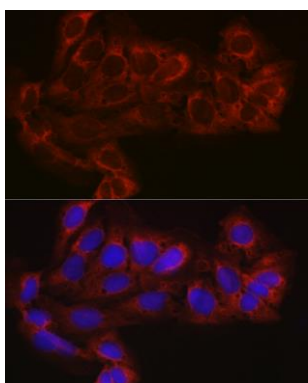
Western blot analysis of extracts of various cell lines, using EIF4E2 antibody (CAB4305) at 1:1000 dilution. Secondary antibody: HRP Goat Anti-Rabbit IgG (H+L) (CABS014) at 1:10000 dilution. Lysates/proteins: 25ug per lane. Blocking buffer: 3% nonfat dry milk in TBST. Detection: ECL Basic Kit (CABM00020). Exposure time: 90s.



Immunofluorescence analysis of C6 cells using EIF4E2 Rabbit pAb (CAB4305) at dilution of 1:100 (40x lens). Blue: DAPI for nuclear staining.



Immunofluorescence analysis of NIH-3T3 cells using EIF4E2 Rabbit pAb (CAB4305) at dilution of 1:100 (40x lens). Blue: DAPI for nuclear staining.



Immunofluorescence analysis of U-2 OS cells using EIF4E2 Rabbit pAb (CAB4305) at dilution of 1:100 (40x lens). Blue: DAPI for nuclear staining.