

# CD147 Rabbit Monoclonal Antibody



**CAB4310**

---

## Product Information

### Size:

20uL, 50uL, 100uL, 200uL

### Observed MW:

40-60KDa

### Calculated MW:

60kDa

### Applications:

WB

### Reactivity:

Human, Mouse

## Protein Background

The protein encoded by this gene is a plasma membrane protein that is important in spermatogenesis, embryo implantation, neural network formation, and tumor progression. The encoded protein is also a member of the immunoglobulin superfamily. Multiple transcript variants encoding different isoforms have been found for this gene. [provided by RefSeq, Jul 2008]

## Immunogen information

### Gene ID:

682

### Uniprot

P35613

### Synonyms:

5F7; CD147; EMMPRIN; OK; TCSF

## Antibody Information

### Recommended dilutions:

WB 1:500 - 1:2000

### Source:

Rabbit

### Isotype:

IgG

### Purification:

Affinity purification

### Immunogen:

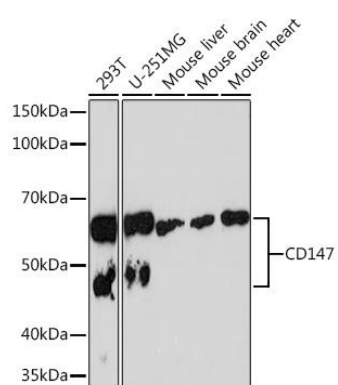
A synthesized peptide derived from human CD147

### Storage:

Store at -20°C. Avoid freeze / thaw cycles. Buffer: PBS with 0.02% sodium azide, 0.05% BSA, 50% glycerol, pH7.3.

## Product Images

---



Western blot - CD147 Rabbit mAb (CAB4310)