

RPH3AL Rabbit Polyclonal Antibody



CAB4311

Product Information

Size:

20uL, 50uL, 100uL, 200uL

Observed MW:

45kDa

Calculated MW:

31kDa/34kDa

Applications:

WB IHC

Reactivity:

Human

Protein Background

The protein encoded by this gene plays a direct regulatory role in calcium-ion-dependent exocytosis in both endocrine and exocrine cells and plays a key role in insulin secretion by pancreatic cells. This gene is likely a tumor suppressor. Alternative splicing results in multiple transcript variants encoding distinct isoforms.

Immunogen information

Gene ID:

9501

Uniprot

Q9UNE2

Synonyms:

RPH3AL; NOC2

Antibody Information

Recommended dilutions:

WB 1:500 - 1:2000 IHC 1:50
- 1:100

Source:

Rabbit

Isotype:

IgG

Purification:

Affinity purification

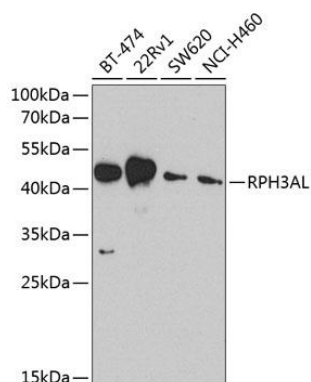
Immunogen:

Recombinant fusion protein containing a sequence corresponding to amino acids 161-315 of human RPH3AL (NP_008918.1).

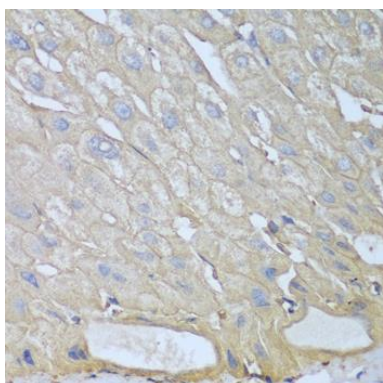
Storage:

Store at -20°C. Avoid freeze / thaw cycles. Buffer: PBS with 0.02% sodium azide, 50% glycerol, pH7.3.

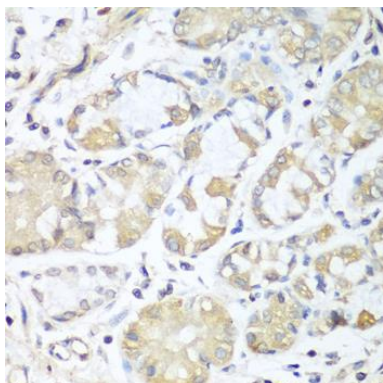
Product Images



Western blot analysis of extracts of various cell lines, using RPH3AL antibody (CAB4311) at 1:1000 dilution. Secondary antibody: HRP Goat Anti-Rabbit IgG (H+L) (CABS014) at 1:10000 dilution. Lysates/proteins: 25ug per lane. Blocking buffer: 3% nonfat dry milk in TBST. Detection: ECL Basic Kit (CABM00020). Exposure time: 90s.



Immunohistochemistry of paraffin-embedded human liver using RPH3AL antibody (CAB4311) at dilution of 1:100 (40x lens).



Immunohistochemistry of paraffin-embedded human stomach using RPH3AL antibody (CAB4311) at dilution of 1:100 (40x lens).