

GOSR1 Rabbit Polyclonal Antibody



CAB4316

Product Information

Size:

20uL, 50uL, 100uL, 200uL

Observed MW:

29kDa

Calculated MW:

21kDa/28kDa

Applications:

WB IF

Reactivity:

Human, Mouse

Protein Background

This gene encodes a trafficking membrane protein which transports proteins among the endoplasmic reticulum and the Golgi and between Golgi compartments. This protein is considered an essential component of the Golgi SNAP receptor (SNARE) complex. Alternatively spliced transcript variants encoding distinct isoforms have been found for this gene.

Immunogen information

Gene ID:

9527

Uniprot

O95249

Synonyms:

GOSR1; GOLIM2; GOS-28; GOS28; GOS28/P28; GS28; P28

Antibody Information

Recommended dilutions:

WB 1:500 - 1:2000 IF 1:50 - 1:200

Source:

Rabbit

Isotype:

IgG

Purification:

Affinity purification

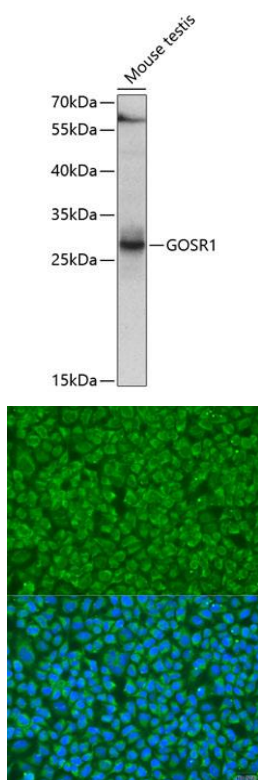
Immunogen:

Recombinant fusion protein containing a sequence corresponding to amino acids 1-115 of human GOSR1 (NP_004862.1).

Storage:

Store at -20°C. Avoid freeze / thaw cycles. Buffer: PBS with 0.02% sodium azide, 50% glycerol, pH7.3.

Product Images



Western blot analysis of extracts of mouse testis, using GOSR1 antibody (CAB4316) at 1:1000 dilution. Secondary antibody: HRP Goat Anti-Rabbit IgG (H+L) (CABS014) at 1:10000 dilution. Lysates/proteins: 25ug per lane. Blocking buffer: 3% nonfat dry milk in TBST. Detection: ECL Enhanced Kit (CABM00021). Exposure time: 15s.

Immunofluorescence analysis of U2OS cells using GOSR1 antibody (CAB4316) at dilution of 1:100. Blue: DAPI for nuclear staining.