

ABCG1 Rabbit Polyclonal Antibody



CAB4328

Product Information

Size:

20uL, 50uL, 100uL, 200uL

Observed MW:

100kDa

Calculated MW:

71kDa/73kDa/74kDa/75kDa/
86kDa

Applications:

WB IHC IF

Reactivity:

Human, Mouse, Rat

Antibody Information

Recommended dilutions:

WB 1:500 - 1:2000 IHC 1:50
- 1:200 IF 1:50 - 1:100

Source:

Rabbit

Isotype:

IgG

Purification:

Affinity purification

Protein Background

The protein encoded by this gene is a member of the superfamily of ATP-binding cassette (ABC) transporters. ABC proteins transport various molecules across extra- and intra-cellular membranes. ABC genes are divided into seven distinct subfamilies (ABC1, MDR/TAP, MRP, ALD, OABP, GCN20, White). This protein is a member of the White subfamily. It is involved in macrophage cholesterol and phospholipids transport, and may regulate cellular lipid homeostasis in other cell types. Six alternative splice variants have been identified.

Immunogen information

Gene ID:

9619

Uniprot

P45844

Synonyms:

ABC8; WHITE1; ABCG1

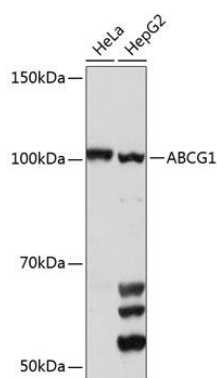
Immunogen:

Recombinant fusion protein containing a sequence corresponding to amino acids 1-220 of human ABCG1 (NP_058198.2).

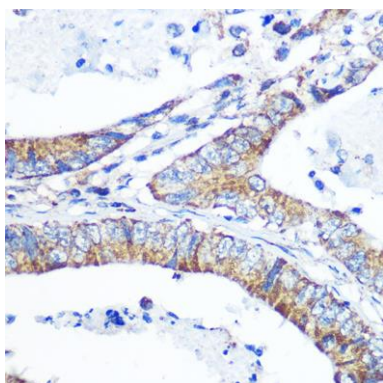
Storage:

Store at -20°C. Avoid freeze / thaw cycles. Buffer: PBS with 0.02% sodium azide, 50% glycerol, pH7.3.

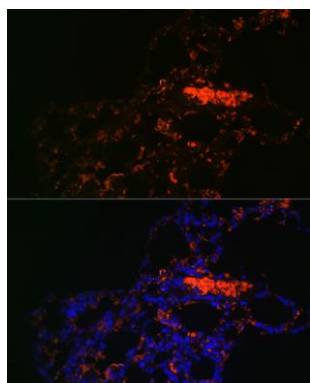
Product Images



Western blot analysis of extracts of various cell lines, using ABCG1 Polyclonal Antibody (CAB4328) at 1:1000 dilution. Secondary antibody: HRP Goat Anti-Rabbit IgG (H+L) (CABS014) at 1:10000 dilution. Lysates/proteins: 25ug per lane. Blocking buffer: 3% nonfat dry milk in TBST. Detection: ECL Basic Kit (CABM00020). Exposure time: 90s.



Immunohistochemistry of paraffin-embedded human colon carcinoma using ABCG1 Rabbit pAb (CAB4328) at dilution of 1:100 (40x lens).



Immunofluorescence analysis of Rat lung using ABCG1 antibody (CAB4328) at dilution of 1:100. Blue: DAPI for nuclear staining.