

SAFB2 Rabbit Polyclonal Antibody



CAB4330

Product Information

Size:

20uL, 50uL, 100uL, 200uL

Observed MW:

160kDa

Calculated MW:

12kDa/107kDa

Applications:

WB IHC

Reactivity:

Human, Mouse, Rat

Protein Background

The protein encoded by this gene, along with its paralog (scaffold attachment factor B1), is a repressor of estrogen receptor alpha. The encoded protein binds scaffold/matrix attachment region (S/MAR) DNA and is involved in cell cycle regulation, apoptosis, differentiation, the stress response, and regulation of immune genes.

Immunogen information

Gene ID:

9667

Uniprot

Q14151

Synonyms:

SAFB2

Antibody Information

Recommended dilutions:

WB 1:1000 - 1:2000 IHC

1:50 - 1:200

Source:

Rabbit

Isotype:

IgG

Purification:

Affinity purification

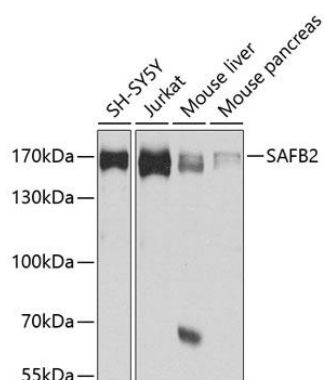
Immunogen:

Recombinant fusion protein containing a sequence corresponding to amino acids 1-255 of human SAFB2 (NP_055464.1).

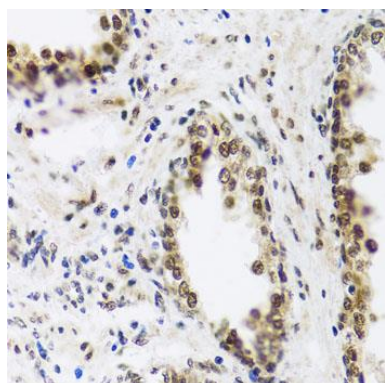
Storage:

Store at -20°C. Avoid freeze / thaw cycles. Buffer: PBS with 0.02% sodium azide, 50% glycerol, pH7.3.

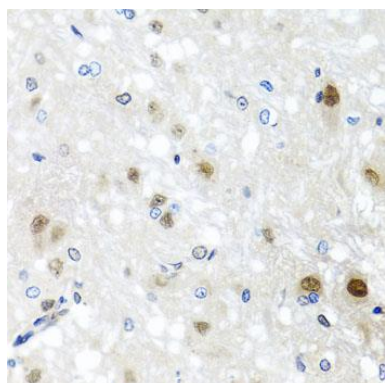
Product Images



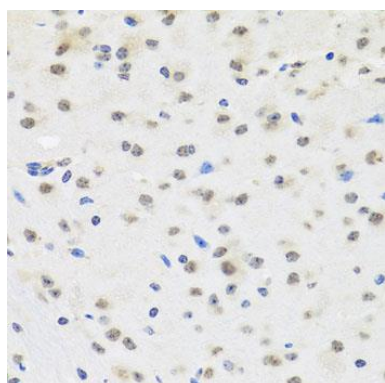
Western blot analysis of extracts of various cell lines, using SAFB2 antibody (CAB4330) at 1:1000 dilution. Secondary antibody: HRP Goat Anti-Rabbit IgG (H+L) (CABS014) at 1:10000 dilution. Lysates/proteins: 25ug per lane. Blocking buffer: 3% nonfat dry milk in TBST. Detection: ECL Basic Kit (CABM00020). Exposure time: 30s.



Immunohistochemistry of paraffin-embedded human prostate using SAFB2 antibody (CAB4330) at dilution of 1:100 (40x lens).



Immunohistochemistry of paraffin-embedded rat brain using SAFB2 antibody (CAB4330) at dilution of 1:100 (40x lens).



Immunohistochemistry of paraffin-embedded mouse brain using SAFB2 antibody (CAB4330) at dilution of 1:100 (40x lens).