

# CLINT1 Rabbit Polyclonal Antibody



CAB4332

---

## Product Information

**Size:**

100uL, 200uL

**Observed MW:**

64kDa

**Calculated MW:**

68kDa/70kDa

**Applications:**

WB IHC

**Reactivity:**

Human

## Protein Background

This gene encodes a protein with similarity to the epsin family of endocytic adapter proteins. The encoded protein interacts with clathrin, the adapter protein AP-1 and phosphoinositides. This protein may be involved in the formation of clathrin coated vesicles and trafficking between the trans-Golgi network and endosomes. Mutations in this gene are associated with a susceptibility to schizophrenia and psychotic disorders. Alternate splicing results in multiple transcript variants.

## Immunogen information

**Gene ID:**

9685

**Uniprot**

Q14677

**Synonyms:**

CLINT1; CLINT; ENTH; EPN4; EPNR

## Antibody Information

**Recommended dilutions:**

WB 1:500 - 1:1000 IHC 1:20  
- 1:50

**Source:**

Rabbit

**Isotype:**

IgG

**Purification:**

Affinity purification

**Immunogen:**

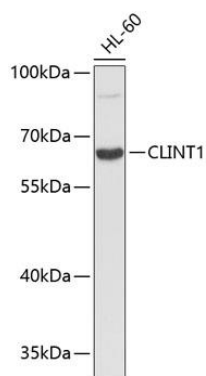
A synthetic Peptide of human CLINT1

**Storage:**

Store at -20°C. Avoid freeze / thaw cycles. Buffer: PBS with 0.02% sodium azide, 50% glycerol, pH7.3.

## Product Images

---



Western blot analysis of extracts of HL-60 cells, using CLINT1 antibody (CAB4332). Secondary antibody: HRP Goat Anti-Rabbit IgG (H+L) (CABS014) at 1:10000 dilution. Lysates/proteins: 25ug per lane. Blocking buffer: 3% nonfat dry milk in TBST.