

Calcineurin A Rabbit Monoclonal Antibody



CAB4346

Product Information

Size:

20uL, 50uL, 100uL, 200uL

Observed MW:

59KDa

Calculated MW:

59kDa

Applications:

WB

Reactivity:

Human, Mouse, Rat

Antibody Information

Recommended dilutions:

WB 1:500 - 1:2000

Source:

Rabbit

Isotype:

IgG

Purification:

Affinity purification

Protein Background

Immunogen information

Gene ID:

5530

Uniprot

Q08209

Synonyms:

CALN; CALNA; CALNA1; CCN1; CNA1; PPP2B

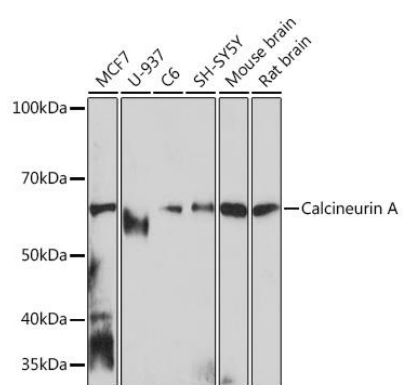
Immunogen:

A synthesized peptide derived from human Calcineurin A

Storage:

Store at -20°C. Avoid freeze / thaw cycles. Buffer: PBS with 0.02% sodium azide, 0.05% BSA, 50% glycerol, pH7.3.

Product Images



Western blot - Calcineurin A Rabbit mAb (CAB4346)