

# SUZ12 Rabbit Monoclonal Antibody



CAB4348

---

## Product Information

### Size:

20uL, 50uL, 100uL, 200uL

### Observed MW:

83KDa

### Calculated MW:

83kDa

### Applications:

WB

### Reactivity:

Human, Mouse, Rat

## Protein Background

This zinc finger gene has been identified at the breakpoints of a recurrent chromosomal translocation reported in endometrial stromal sarcoma. Recombination of these breakpoints results in the fusion of this gene and JAZF1. The protein encoded by this gene contains a zinc finger domain in the C terminus of the coding region. [provided by RefSeq, Jul 2009]

## Immunogen information

### Gene ID:

23512

### Uniprot

Q15022

### Synonyms:

CHET9; JAZ1

## Antibody Information

### Recommended dilutions:

WB 1:500 - 1:2000

### Source:

Rabbit

### Isotype:

IgG

### Purification:

Affinity purification

### Immunogen:

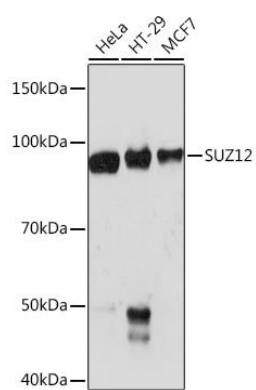
A synthesized peptide derived from human SUZ12

### Storage:

Store at -20°C. Avoid freeze / thaw cycles. Buffer: PBS with 0.02% sodium azide, 0.05% BSA, 50% glycerol, pH7.3.

## Product Images

---



Western blot - SUZ12 Rabbit mAb (CAB4348)