

LYVE1 Rabbit Monoclonal Antibody



CAB4352

Product Information

Size:

20uL, 50uL, 100uL, 200uL

Observed MW:

33KDa

Calculated MW:

35kDa

Applications:

WB

Reactivity:

Human, Mouse, Rat

Protein Background

This gene encodes a type I integral membrane glycoprotein. The encoded protein acts as a receptor and binds to both soluble and immobilized hyaluronan. This protein may function in lymphatic hyaluronan transport and have a role in tumor metastasis. [provided by RefSeq, Jul 2008]

Immunogen information

Gene ID:

10894

Uniprot

Q9Y5Y7

Synonyms:

CRSBP-1; HAR; LYVE-1; XLKD1

Antibody Information

Recommended dilutions:

WB 1:500 - 1:2000

Source:

Rabbit

Isotype:

IgG

Purification:

Affinity purification

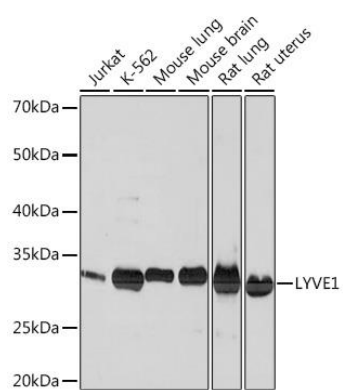
Immunogen:

A synthesized peptide derived from human LYVE1

Storage:

Store at -20°C. Avoid freeze / thaw cycles. Buffer: PBS with 0.02% sodium azide, 0.05% BSA, 50% glycerol, pH7.3.

Product Images



Western blot - LYVE1 Rabbit mAb (CAB4352)