

# DYNLL1 Rabbit Monoclonal Antibody



CAB4353

---

## Product Information

### Size:

20uL, 50uL, 100uL, 200uL

### Observed MW:

10kDa

### Calculated MW:

10kDa

### Applications:

WB IHC

### Reactivity:

Human, Mouse, Rat

## Protein Background

Cytoplasmic dyneins are large enzyme complexes with a molecular mass of about 1, 200 kD. They contain two force-producing heads formed primarily from dynein heavy chains, and stalks linking the heads to a basal domain, which contains a varying number of accessory intermediate chains. The complex is involved in intracellular transport and motility. The protein described in this record is a light chain and exists as part of this complex but also physically interacts with and inhibits the activity of neuronal nitric oxide synthase. Binding of this protein destabilizes the neuronal nitric oxide synthase dimer, a conformation necessary for activity, and it may regulate numerous biologic processes through its effects on nitric oxide synthase activity. Alternate transcriptional splice variants have been characterized. [provided by RefSeq, Jul 2008]

## Immunogen information

### Gene ID:

8655

### Uniprot

P63167

## Antibody Information

### Recommended dilutions:

WB 1:500 - 1:2000 IHC 1:50  
- 1:200

### Source:

Rabbit

### Synonyms:

DLC1; DLC8; DNCL1; DNCLC1; LC8; LC8a; PIN; hdlc1

### Immunogen:

A synthesized peptide derived from human DYNLL1

### Isotype:

IgG

### Storage:

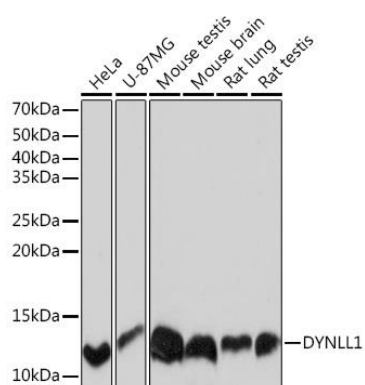
Store at -20°C. Avoid freeze / thaw cycles. Buffer: PBS with 0.02% sodium azide, 0.05% BSA, 50% glycerol, pH7.3.

### Purification:

Affinity purification

## Product Images

---



Western blot - DYNLL1 Rabbit mAb (CAB4353)