

NEDD4 Rabbit Monoclonal Antibody



CAB4385

Product Information

Size:

20uL, 50uL, 100uL, 200uL

Observed MW:

120KDa

Calculated MW:

135kDa

Applications:

WB

Reactivity:

Human

Protein Background

This gene is the founding member of the NEDD4 family of HECT ubiquitin ligases that function in the ubiquitin proteasome system of protein degradation. The encoded protein contains an N-terminal calcium and phospholipid binding C2 domain followed by multiple tryptophan-rich WW domains and, a C-terminal HECT ubiquitin ligase catalytic domain. It plays critical role in the regulation of a number of membrane receptors, endocytic machinery components and the tumor suppressor PTEN. [provided by RefSeq, Jul 2016]

Immunogen information

Gene ID:

4734

Uniprot

P46934

Synonyms:

NEDD4-1; RPF1

Antibody Information

Recommended dilutions:

WB 1:500 - 1:2000

Source:

Rabbit

Isotype:

IgG

Purification:

Affinity purification

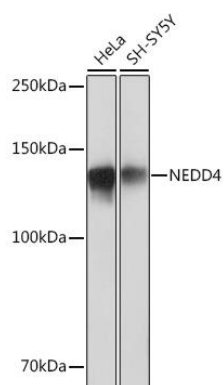
Immunogen:

A synthesized peptide derived from human NEDD4

Storage:

Store at -20°C. Avoid freeze / thaw cycles. Buffer: PBS with 0.02% sodium azide, 0.05% BSA, 50% glycerol, pH7.3.

Product Images



Western blot - NEDD4 Rabbit mAb (CAB4385)