

CAB4401

Product Information

Size:

20uL, 50uL, 100uL, 200uL

Observed MW:

60kDa

Calculated MW:

63kDa

Applications:

WB

Reactivity:

Human, Rat

Antibody Information

Recommended dilutions:

WB 1:500 - 1:2000

Source:

Rabbit

Isotype:

IgG

Purification:

Affinity purification

Protein Background

This gene encodes a member of the glucose phosphate isomerase protein family. The encoded protein has been identified as a moonlighting protein based on its ability to perform mechanistically distinct functions. In the cytoplasm, the gene product functions as a glycolytic enzyme (glucose-6-phosphate isomerase) that interconverts glucose-6-phosphate and fructose-6-phosphate. Extracellularly, the encoded protein (also referred to as neuroleukin) functions as a neurotrophic factor that promotes survival of skeletal motor neurons and sensory neurons, and as a lymphokine that induces immunoglobulin secretion. The encoded protein is also referred to as autocrine motility factor based on an additional function as a tumor-secreted cytokine and angiogenic factor. Defects in this gene are the cause of nonspherocytic hemolytic anemia and a severe enzyme deficiency can be associated with hydrops fetalis, immediate neonatal death and neurological impairment. Alternative splicing results in multiple transcript variants. [provided by RefSeq, Aug 2016]

Immunogen information

Gene ID:

2821

Uniprot

P06744

Synonyms:

AMF; GNPI; NLK; PGI; PHI; SA-36; SA36

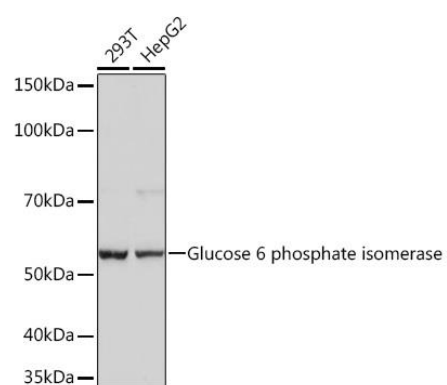
Immunogen:

A synthesized peptide derived from human Glucose 6 phosphate isomerase

Storage:

Store at -20°C. Avoid freeze / thaw cycles. Buffer: PBS with 0.02% sodium azide, 0.05% BSA, 50% glycerol, pH7.3.

Product Images



Western blot - GPI Rabbit mAb (CAB4401)