

Carbonic Anhydrase 1 Rabbit Monoclonal Antibody

CAB4406



Product Information

Size:

20uL, 50uL, 100uL, 200uL

Observed MW:

29KDa

Calculated MW:

29kDa

Applications:

WB

Reactivity:

Mouse, Rat

Antibody Information

Recommended dilutions:

WB 1:500 - 1:2000

Source:

Rabbit

Isotype:

IgG

Purification:

Affinity purification

Protein Background

Carbonic anhydrases (CAs) are a large family of zinc metalloenzymes that catalyze the reversible hydration of carbon dioxide. They participate in a variety of biological processes, including respiration, calcification, acid-base balance, bone resorption, and the formation of aqueous humor, cerebrospinal fluid, saliva and gastric acid. They show extensive diversity in tissue distribution and in their subcellular localization. This CA1 gene is closely linked to the CA2 and CA3 genes on chromosome 8. It encodes a cytosolic protein that is found at the highest level in erythrocytes. Allelic variants of this gene have been described in some populations. Alternative splicing and the use of alternative promoters results in multiple transcript variants. [provided by RefSeq, Nov 2016]

Immunogen information

Gene ID:

759

Uniprot

P00915

Synonyms:

CA-I; CAB; Car1; HEL-S-11

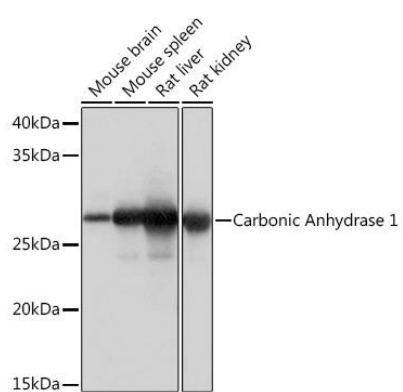
Immunogen:

A synthesized peptide derived from human Carbonic Anhydrase 1

Storage:

Store at -20°C. Avoid freeze / thaw cycles. Buffer: PBS with 0.02% sodium azide, 0.05% BSA, 50% glycerol, pH7.3.

Product Images



Western blot - Carbonic Anhydrase 1 Rabbit mAb (CAB4406)