

Thioredoxin 2 Rabbit Monoclonal Antibody



CAB4424

Product Information

Size:

20uL, 50uL, 100uL, 200uL

Observed MW:

13KDa

Calculated MW:

12kDa

Applications:

WB IF

Reactivity:

Human, Mouse, Rat

Protein Background

This nuclear gene encodes a mitochondrial member of the thioredoxin family, a group of small multifunctional redox-active proteins. The encoded protein may play important roles in the regulation of the mitochondrial membrane potential and in protection against oxidant-induced apoptosis. [provided by RefSeq, Jul 2008]

Immunogen information

Gene ID:

25828

Uniprot

Q99757

Synonyms:

COXPD29; MT-TRX; MTRX; TRX2; TXN

Antibody Information

Recommended dilutions:

WB 1:500 - 1:2000 IF 1:50 - 1:200

Source:

Rabbit

Isotype:

IgG

Purification:

Affinity purification

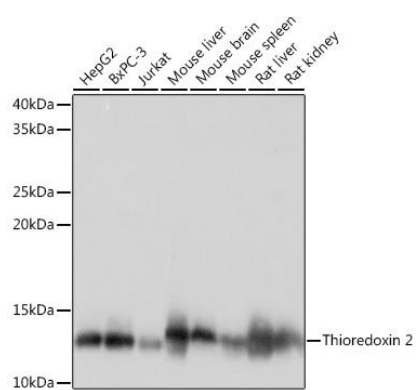
Immunogen:

A synthesized peptide derived from human Thioredoxin 2

Storage:

Store at -20°C. Avoid freeze / thaw cycles. Buffer: PBS with 0.02% sodium azide, 0.05% BSA, 50% glycerol, pH7.3.

Product Images



Western blot - Thioredoxin 2 Rabbit mAb (CAB4424)