

PNMA2 Rabbit Polyclonal Antibody



CAB4448

Product Information

Size:

20uL, 50uL, 100uL, 200uL

Observed MW:

41kDa

Calculated MW:

41kDa

Applications:

WB

Reactivity:

Human, Rat

Antibody Information

Recommended dilutions:

WB 1:500 - 1:2000

Source:

Rabbit

Isotype:

IgG

Purification:

Affinity purification

Protein Background

Immunogen information

Gene ID:

10687

Uniprot

Q9UL42

Synonyms:

PNMA2; MA2; MM2; RGAG2

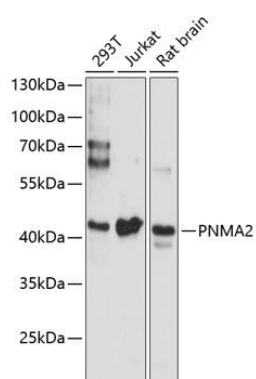
Immunogen:

Recombinant fusion protein containing a sequence corresponding to amino acids 1-140 of human PNMA2 (NP_009188.1).

Storage:

Store at -20°C. Avoid freeze / thaw cycles. Buffer: PBS with 0.02% sodium azide, 50% glycerol, pH7.3.

Product Images



Western blot analysis of extracts of various cell lines, using PNMA2 antibody (CAB4448) at 1:3000 dilution. Secondary antibody: HRP Goat Anti-Rabbit IgG (H+L) (CABS014) at 1:10000 dilution. Lysates/proteins: 25ug per lane. Blocking buffer: 3% nonfat dry milk in TBST. Detection: ECL Enhanced Kit (CABM00021). Exposure time: 90s.