

RBBP9 Rabbit Polyclonal Antibody



CAB4451

Product Information

Size:

20uL, 50uL, 100uL, 200uL

Observed MW:

18kDa

Calculated MW:

19kDa/21kDa

Applications:

WB IHC

Reactivity:

Human, Mouse, Rat

Protein Background

The protein encoded by this gene is a retinoblastoma binding protein that may play a role in the regulation of cell proliferation and differentiation. Two alternatively spliced transcript variants of this gene with identical predicted protein products have been reported, one of which is a nonsense-mediated decay candidate.

Immunogen information

Gene ID:

10741

Uniprot

O75884

Synonyms:

RBBP9; BOG; RBBP10

Antibody Information

Recommended dilutions:

WB 1:500 - 1:2000 IHC 1:50
- 1:200

Source:

Rabbit

Isotype:

IgG

Purification:

Affinity purification

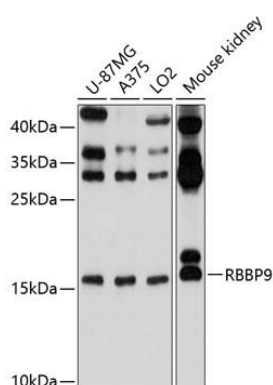
Immunogen:

Recombinant fusion protein containing a sequence corresponding to amino acids 1-186 of human RBBP9 (NP_006597.2).

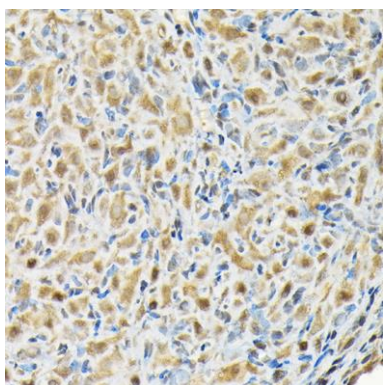
Storage:

Store at -20°C. Avoid freeze / thaw cycles. Buffer: PBS with 0.02% sodium azide, 50% glycerol, pH7.3.

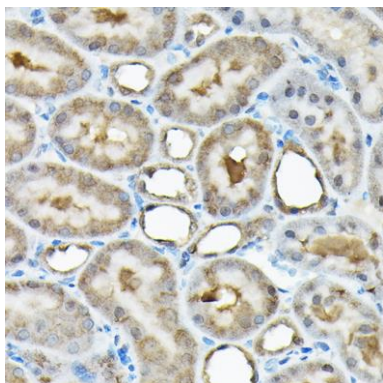
Product Images



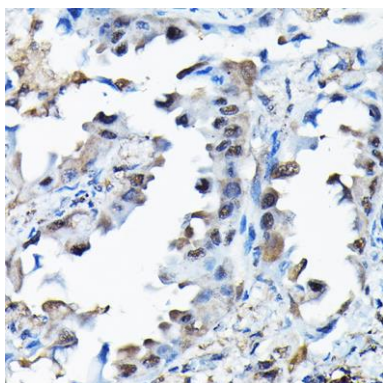
Western blot analysis of extracts of various cell lines, using RBBP9 antibody (CAB4451) at 1:1000 dilution. Secondary antibody: HRP Goat Anti-Rabbit IgG (H+L) (CABS014) at 1:10000 dilution. Lysates/proteins: 25ug per lane. Blocking buffer: 3% nonfat dry milk in TBST. Detection: ECL Basic Kit (CABM00020). Exposure time: 10s.



Immunohistochemistry of paraffin-embedded rat ovary using RBBP9 Rabbit pAb (CAB4451) at dilution of 1:200 (40x lens).



Immunohistochemistry of paraffin-embedded rat kidney using RBBP9 Rabbit pAb (CAB4451) at dilution of 1:200 (40x lens).



Immunohistochemistry of paraffin-embedded human lung cancer using RBBP9 Rabbit pAb (CAB4451) at dilution of 1:200 (40x lens).