

# GCLC Rabbit Monoclonal Antibody



CAB4499

## Product Information

### Size:

20uL, 50uL, 100uL, 200uL

### Observed MW:

73KDa

### Calculated MW:

73kDa

### Applications:

WB IHC

### Reactivity:

Human, Rat

## Antibody Information

### Recommended dilutions:

WB 1:500 - 1:2000 IHC 1:50  
- 1:200

### Source:

Rabbit

### Isotype:

IgG

### Purification:

Affinity purification

## Protein Background

Glutamate-cysteine ligase, also known as gamma-glutamylcysteine synthetase is the first rate-limiting enzyme of glutathione synthesis. The enzyme consists of two subunits, a heavy catalytic subunit and a light regulatory subunit. This locus encodes the catalytic subunit, while the regulatory subunit is derived from a different gene located on chromosome 1p22-p21. Mutations at this locus have been associated with hemolytic anemia due to deficiency of gamma-glutamylcysteine synthetase and susceptibility to myocardial infarction.[provided by RefSeq, Oct 2010]

## Immunogen information

### Gene ID:

2729

### Uniprot

P48506

### Synonyms:

GCL; GCS; GLCL; GLCLC

### Immunogen:

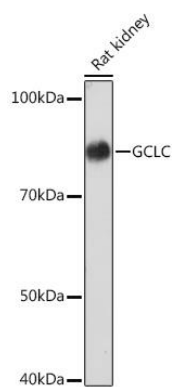
A synthesized peptide derived from human GCLC

### Storage:

Store at -20°C. Avoid freeze / thaw cycles. Buffer: PBS with 0.02% sodium azide, 0.05% BSA, 50% glycerol, pH7.3.

## Product Images

---



Western blot - GCLC Rabbit mAb (CAB4499)