

PHB2 Rabbit Polyclonal Antibody



CAB4504

Product Information

Size:

20uL, 50uL, 100uL, 200uL

Observed MW:

32kDa

Calculated MW:

29kDa/33kDa

Applications:

WB IHC IF

Reactivity:

Human, Mouse, Rat

Antibody Information

Recommended dilutions:

WB 1:500 - 1:2000 IHC 1:50
- 1:100 IF 1:50 - 1:100

Source:

Rabbit

Isotype:

IgG

Purification:

Affinity purification

Protein Background

Immunogen information

Gene ID:

11331

Uniprot

Q99623

Synonyms:

PHB2; BAP; BCAP37; Bap37; PNAS-141; REA; hBAP; p22

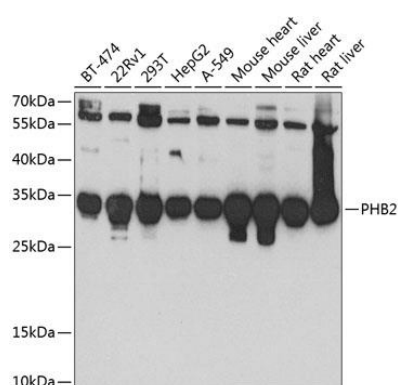
Immunogen:

Recombinant fusion protein containing a sequence corresponding to amino acids 1-299 of human PHB2 (NP_001138303.1).

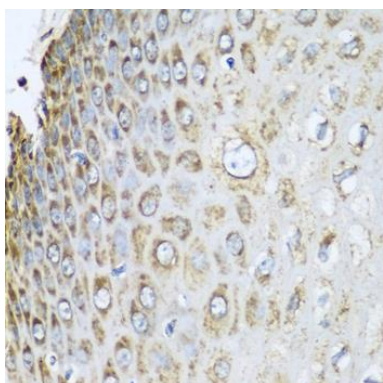
Storage:

Store at -20°C. Avoid freeze / thaw cycles. Buffer: PBS with 0.02% sodium azide, 50% glycerol, pH7.3.

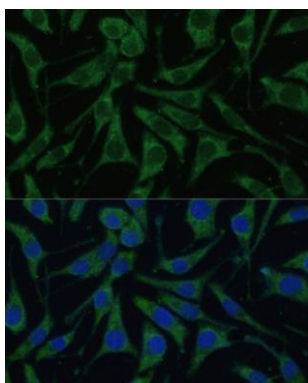
Product Images



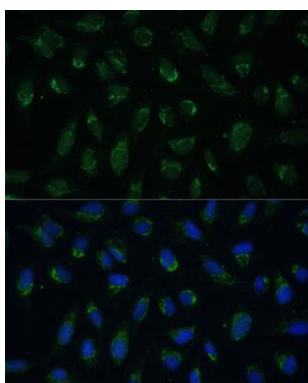
Western blot analysis of extracts of various cell lines, using PHB2 antibody (CAB4504) at 1:1000 dilution. Secondary antibody: HRP Goat Anti-Rabbit IgG (H+L) (CABS014) at 1:10000 dilution. Lysates/proteins: 25ug per lane. Blocking buffer: 3% nonfat dry milk in TBST. Detection: ECL Basic Kit (CABM00020). Exposure time: 90s.



Immunohistochemistry of paraffin-embedded human esophagus using PHB2 antibody (CAB4504) at dilution of 1:100 (40x lens).



Immunofluorescence analysis of L929 cells using PHB2 Polyclonal Antibody (CAB4504) at dilution of 1:100 (40x lens). Blue: DAPI for nuclear staining.



Immunofluorescence analysis of U-2 OS cells using PHB2 Polyclonal Antibody (CAB4504) at dilution of 1:100 (40x lens). Blue: DAPI for nuclear staining.