

Protein C Rabbit Monoclonal Antibody



CAB4532

Product Information

Size:

20uL, 50uL, 100uL, 200uL

Observed MW:

52KDa

Calculated MW:

52kDa

Applications:

WB IF

Reactivity:

Human, Mouse

Protein Background

This gene encodes a vitamin K-dependent plasma glycoprotein. The encoded protein is cleaved to its activated form by the thrombin-thrombomodulin complex. This activated form contains a serine protease domain and functions in degradation of the activated forms of coagulation factors V and VIII. Mutations in this gene have been associated with thrombophilia due to protein C deficiency, neonatal purpura fulminans, and recurrent venous thrombosis.[provided by RefSeq, Dec 2009]

Immunogen information

Gene ID:

5624

Uniprot

P04070

Synonyms:

APC; PC; PROC1; THPH3; THPH4

Antibody Information

Recommended dilutions:

WB 1:500 - 1:2000 IF 1:50 - 1:200

Source:

Rabbit

Isotype:

IgG

Purification:

Affinity purification

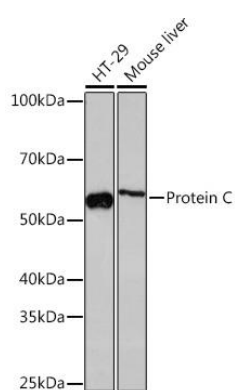
Immunogen:

A synthesized peptide derived from human Protein C

Storage:

Store at -20°C. Avoid freeze / thaw cycles. Buffer: PBS with 0.02% sodium azide, 0.05% BSA, 50% glycerol, pH7.3.

Product Images



Western blot - Protein C Rabbit mAb (CAB4532)