

# PRPF8 Rabbit Monoclonal Antibody



CAB4575

## Product Information

### Size:

20uL, 50uL, 100uL, 200uL

### Observed MW:

274kDa

### Calculated MW:

274kDa

### Applications:

WB IHC IF

### Reactivity:

Human, Mouse, Rat

## Protein Background

Pre-mRNA splicing occurs in 2 sequential transesterification steps. The protein encoded by this gene is a component of both U2- and U12-dependent spliceosomes, and found to be essential for the catalytic step II in pre-mRNA splicing process. It contains several WD repeats, which function in protein-protein interactions. This protein has a sequence similarity to yeast Prp8 protein. This gene is a candidate gene for autosomal dominant retinitis pigmentosa. [provided by RefSeq, Jul 2008]

## Immunogen information

### Gene ID:

10594

### Uniprot

Q6P2Q9

### Synonyms:

HPRP8; PRP8; PRPC8; RP13; SNRNP220

## Antibody Information

### Recommended dilutions:

WB 1:500 - 1:2000 IHC 1:50  
- 1:200 IF 1:50 - 1:200

### Source:

Rabbit

### Isotype:

IgG

### Purification:

Affinity purification

### Immunogen:

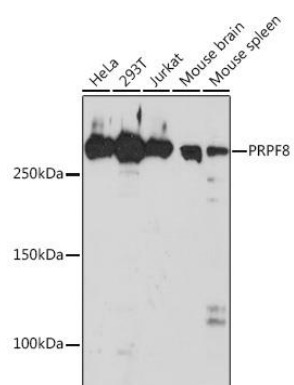
A synthesized peptide derived from human PRPF8

### Storage:

Store at -20°C. Avoid freeze / thaw cycles. Buffer: PBS with 0.02% sodium azide, 0.05% BSA, 50% glycerol, pH7.3.

## Product Images

---



Western blot - PRPF8 Rabbit mAb (CAB4575)